

**BLANCO COUNTY  
REQUEST FOR A LINE-ITEM TRANSFER**

DATE: 10/24/19

TO: **HONORABLE COMMISSIONERS COURT OF BLANCO COUNTY, TEXAS**

FROM: Brett Bray

DEPARTMENT Emergency Management

I SUBMIT TO YOU FOR YOUR CONSIDERATION, THE FOLLOWING LINE ITEM TRANSFERS:

FUND	LINE ITEM DESCRIPTION	LINE ITEM #	AMOUNT
FROM: <u>general</u>	<u>VHF Conventional Upgrades</u>	<u>10-445-353</u>	<u>\$ 6,500.00</u>

TO: <u>special</u>	<u>Countywide Emergency Radio Cash acct</u>	<u>21-100-125</u>	<u>\$ 6,500.00</u>
--------------------	---	-------------------	--------------------

Reason for request:

move funds to special account to build balance for future needs

Note: This change is the budget for county purposes is in accordance with 111.011  
Changes in Budget for County Purposes" of the Local Government Code.

\_\_\_\_\_  
Department Head Signature

\_\_\_\_\_  
Attest: County Clerk  
(if Commissioners' Court Action)

\_\_\_\_\_  
Co Judge/Commissioners' Court Approval  
(as needed)

BLANCO COUNTY  
REQUEST FOR A LINE-ITEM TRANSF

Funds are available.

9/12/19

*[Signature]*

DATE: 9-12-19

TO: HONORABLE COMMISSIONERS COURT OF BLANCO COUNTY, TE

FROM: PAUL GRANBERG

DEPARTMENT R+B Pct 4

I SUBMIT TO YOU FOR YOUR CONSIDERATION, THE FOLLOWING LINE ITEM TRANSFERS:

FUND	LINE ITEM DESCRIPTION	LINE ITEM #	AMOUNT
FROM: <u>15-570-326</u>	<u>COMPUTER OPERATION</u>	<u>326</u>	<u>200.00</u>
TO: <u>15-570-10</u>	<u>MISCELLANEOUS</u>	<u>310</u>	<u>200.00</u>

Reason for request:

PURCHASE TOOLS

Note: This change is the budget for county purposes is in accordance with 111.011 Changes in Budget for County Purposes" of the Local Government Code.

Paul Granberg  
Department Head Signature

Attest: County Clerk  
(if Commissioners' Court Action)

Brett Brantley  
Co Judge/Commissioners' Court Approval  
(as needed)

**BLANCO COUNTY  
REQUEST FOR A LINE-ITEM TRANSFER**

Funds are available.

8

DATE: 9/11/19

9/11/19 ✓

TO: HONORABLE COMMISSIONERS COURT OF BLANCO COUNTY, TEXAS

FROM: Chris Liesmann

DEPARTMENT R+B Pct #3

I SUBMIT TO YOU FOR YOUR CONSIDERATION, THE FOLLOWING LINE ITEM TRANSFERS:

FUND	LINE ITEM DESCRIPTION	LINE ITEM #	AMOUNT
FROM: <u>Road + Bridge</u>	<u>Misc</u>	<u>15-560-310</u>	<u>4106.72</u>
TO: <u>Road + Bridge</u>	<u>Fuel</u>	<u>312</u>	<u>840.71</u>
	<u>Signs</u>	<u>15-560-314</u>	<u>1629.64</u>
	<u>Road Material</u>	<u>15-560-318</u>	<u>436.37</u>
	<u>Joint equipment</u>	<u>15-560-327</u>	<u>1200.00</u>

Reason for request:  
Purchase of Equipment

Note: This change is the budget for county purposes is in accordance with 111.011 Changes in Budget for County Purposes" of the Local Government Code.

[Signature]  
Department Head Signature

Attest: County Clerk  
(if Commissioners' Court Action)

[Signature]  
Co Judge/Commissioners' Court Approval  
(as needed)

Funds

are available

9/12/19

BLANCO COUNTY  
REQUEST FOR A LINE-ITEM TRANSFER

DATE: 11-Sep-19

TO: HONORABLE COMMISSIONERS COURT OF BLANCO COUNTY, TE)

FROM: TommY Weir Blanco County Commissioner

DEPARTMENT Precinct1 Road & Bridge

I SUBMIT TO YOU FOR YOUR CONSIDERATION, THE FOLLOWING LINE ITEM TRANSFERS:

FUND	LINE ITEM DESCRIPTION	LINE ITEM #	AMOUNT
FROM: concrete		15-540-322	\$1,000.00
Culv. & Cattle Grds		15-540-316	\$1,000.00
Equip. Maint./Tools		15-540-308	\$1,000.00
Contract Labor		15-540-320	\$1,000.00
Fuel		15-540-312	\$1,000.00
Telephone		15-540-304	\$500.00
Uniforms		15-540-306	\$500.00
TO:			
Paving		15-540-324	\$6,000.00

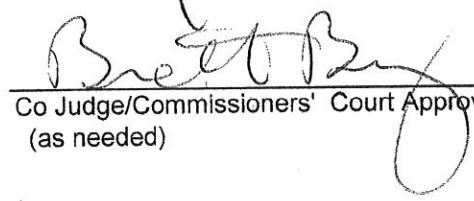
Reason for request:

Fog Sealing Trainer-Wuest Rd.

Note: This change in the budget for county purposes is in accordance with 111.011 "Changes in Budget for County Purposes" of the Local Government Code.

  
Department Head Signature

Attest: County Clerk  
(if Commissioners' Court Action)

  
Co Judge/Commissioners' Court Approval  
(as needed)



# Blanco County Commissioners' Court

24-Sep-19

## Invoice File Listing By Fund

Fund	Description	Disbursement
010	General Fund	115,418.31
015	Road & Bridge Fund	73,823.22
017	Records Management Clerk	96.40
019	Child Safety Fund	6,486.00
045	Inmate Commissary	88.95
060	Interest & Sinking Fund	550.00
<b>Total</b>		<b>196,462.88</b>

The attached list of Claims Payable have been examined & approved for payment by the County Auditor as provided by the Texas LGC 113.064 & 113.065

Attest County Auditor: Cindy J. Dent Date 09/20/19

The attached list of Claims Payable have been examined & approved for payment by the Commissioners' Court as provided by the Texas LGC 115.021 & 115.022

County Judge \_\_\_\_\_ Date \_\_\_\_\_  
 Commissioner Pct 1 \_\_\_\_\_ Commissioner Pct 3 \_\_\_\_\_  
 Commissioner Pct 2 \_\_\_\_\_ Commissioner Pct 4 \_\_\_\_\_

DEPARTMENT					
NAME-OF-VENDOR	INVOICE-NO	S	DESCRIPTION-OF-INVOICE	AMOUNT	
0400-COUNTY JUDGE EXPENSES					
BRETT BRAY	70466	A	REIMBURSEMENT	439.66	
BRETT BRAY	70467	A	REIMBURSEMENT	110.00	
DEPARTMENT TOTAL				549.66	
0411-ELECTIONS ADMINISTRATOR					
BUSINESS CENTER PRINT & OS	70468	A	INV#137722 EA	36.99	
ELECTION SYSTEMS & SOFTWARE	70472	A	INV#1097525 EA	200.00	
ELECTION SYSTEMS & SOFTWARE	70473	A	INV#1093358 EA	222.64	
DEPARTMENT TOTAL				459.63	
0415-COUNTY ATTORNEY					
QUILL CORPORATION	70524	A	INV#9871030 CO ATTY	12.99	
QUILL CORPORATION	70525	A	INV#9883082 CO ATTY	46.98	
QUILL CORPORATION	70526	A	INV#9882931 CO ATTY	85.98	
DEPARTMENT TOTAL				145.95	
0425-COUNTY SHERIFF					
ALL CLEAR AUTO GLASS	70455	A	INV#6523 LEC	339.00	
BLANCO COUNTY TAX ASSESSOR-COLLECT	70465	A	LICENSE TAG #1223409 LEC	7.50	
CAPITOL AREA COUNCIL OF GOVERNMENTS	70469	A	INV#2019EC 044 LEC	60.00	
CAPITOL AREA COUNCIL OF GOVERNMENTS	70470	A	INV#2019RTA 921	80.00	
EXPRESS AUTOMOTIVE SERVICE	70475	A	INV#3756224 LEC	50.31	
EXPRESS AUTOMOTIVE SERVICE	70477	A	INV#3756373 LEC	85.00	
GALLS, LLC	70479	A	INV#OR13904845 LEC	287.95	
GALLS, LLC	70480	A	INV#013348850 LEC	89.50	
GOEVIDENCE FORENSIC LABS, LLC	70481	A	INV#1034 LEC	525.00	
GT DISTRIBUTORS, INC	70483	A	INV#1981069 LEC	1,050.35	
GT DISTRIBUTORS, INC	70484	A	INV#2008679 LEC	690.00	
GT DISTRIBUTORS, INC	70485	A	INV#2008679 LEC	289.93	
ICS JAIL SUPPLIES INC.	70488	A	INV# W3064500 LEC	82.80	
JOHNSON CITY HYDRO GAS	70410	A	ACCT #2570 JAIL	650.60	
JOHNSON CITY TOWING	70412	A	INV #2964 PATROL TRUCK	345.00	
JULIANN BUSSEY	70494	A	REIMBURSEMENT	878.68	
JULIANN BUSSEY	70495	A	REIMBURSEMENT	55.74	
MARY K. HAGEMEIER DDS	70500	A	INMATE DENTAL - STATHOS, T	120.00	
MARY K. HAGEMEIER DDS	70501	A	INMATE DENTAL - HOFFPAUIR, C	95.00	
MARY K. HAGEMEIER DDS	70502	A	INMATE DENTAL - ERIDONDO, S	50.00	
MCHD	70415	A	INV #BCSO-0819 LEC	180.00	
MILLER UNIFORMS & EMBLEMS, INC.	70476	A	INV#OR13671375 LEC	76.50	
MILLER UNIFORMS & EMBLEMS, INC.	70478	A	INV#OR13840327 LEC	56.99	
OFFICESUPPLY.COM	70507	A	INV#3470595 LEC	98.97	
PEDERNALES ELECTRIC COOP	70417	A	INV #955 JAIL	3,971.71	
PERFORMANCE FOOD SERVICE	70511	A	INV#9640127 LEC	1,187.62	
PERFORMANCE FOOD SERVICE	70512	A	INV#9640127 LEC	6.97	
PERFORMANCE FOOD SERVICE	70513	A	INV#9647327 LEC	1,007.97	
PERFORMANCE FOOD SERVICE	70514	A	INV#9647327 LEC	6.97	
PERFORMANCE FOOD SERVICE	70515	A	INV#9649864 LEC	26.10	
PERFORMANCE FOOD SERVICE	70516	A	INV#9654633 LEC	1,280.22	
PETERSON TIRE	70517	A	INV#JC31229 LEC	679.80	
PETERSON TIRE	70518	A	INV#JC31197 LEC	7.00	
PETERSON TIRE	70519	A	INV#JC31174 LEC	46.45	
SCOTT & WHITE HOSPITAL	70420	A	PATIENT #PT9382434771 JAIL	24.59	
SCOTT & WHITE HOSPITAL	70421	A	PATIENT #PT9382434761 JAIL	108.89	
SIRCHIE SUPPLY	70529	A	INV#0413680-IN LEC	106.50	
STEVEN A LOGSDON	70534	A	PRE-EMPLOYMENT EXAMS - GRAY, J	175.00	
THOMSON WEST	70430	A	INV #840861048 LEC	275.00	

-----					
DEPARTMENT					
NAME-OF-VENDOR	INVOICE-NO	S	DESCRIPTION-OF-INVOICE		AMOUNT
ZUERCHER TECHNOLOGIES, LLC	70435	A	INV #250735 LEC		987.62
DEPARTMENT TOTAL					16,143.23
0432-COUNTY AUDITOR					
LLANO COUNTY AUDITOR/TREASURER	70414	A	1/2 HEALTH INSURANCE AUDITOR		4,600.14
QUILL CORPORATION	70521	A	INV#9784843 AUDITOR		126.58
VERIZON WIRELESS	70432	A	AUDITOR		21.35
DEPARTMENT TOTAL					4,748.07
0435-INDIGENT HEALTH CARE					
BLANCO PHARMACY & WELLNESS	70395	A	INDIGENT		211.35
BLANCO REGIONAL CLINIC P.A.	70396	A	PATIENT #UPSFR0001		33.27
HILL COUNTRY PRIMARY CARE PHYSICIAN	70409	A	PATIENT #229JHX3228761		62.24
JOHNSON CITY PHARMACY	70411	A	INDIGENT		146.09
DEPARTMENT TOTAL					452.95
0445-EMERGENCY MANAGEMENT					
DIALTONESERVICEES L. P.	70399	A	ACCT #100000001443 SHERIFF		7.12
DIALTONESERVICEES L. P.	70400	A	ACCT #100000001486 CO JUDGE		7.12
DIALTONESERVICEES L. P.	70401	A	ACCT #100000001487 COUNTY DISPATCH		7.12
DIALTONESERVICEES L. P.	70402	A	ACCT #100000001488 EMC		7.12
DEPARTMENT TOTAL					28.48
0450-JUDICIAL EXPENSES					
BLANCO CO CHILD PROTECTION BD	70389	A	JURY DONATIONS		283.00
BLANCO CO CHILD PROTECTION BD	70392	A	JURY DONATIONS		40.00
CENTRAL TEXAS AUTOPSY PLLC	70454	A	INV #12901 CTA-117-19		2,100.00
HILL COUNTRY CHILD ADVOCACY CT	70390	A	JURY DONATIONS		187.00
STATE COMPTROLLER	70391	A	JURY DONATIONS 3		18.00
STATE COMPTROLLER	70393	A	JURY DONATIONS 1/4		10.00
STEVEN R WITTEKIEND	70423	A	424TH CASE #JV00112 JUV		375.00
STEVEN R WITTEKIEND	70424	A	33RD CASE #CR01667		375.00
VANA AND VANA LAW FIRM	70431	A	33RD CASE #1678		375.00
DEPARTMENT TOTAL					3,763.00
0451-DISTRICT JUDGE					
ALAN GARRETT	70436	A	JUVENILE BOARD COMP		100.00
BURNET COUNTY TREASURER	70398	A	AUGUST 2019 DIST JUDGE		6,402.62
EVAN C. STUBBS	70437	A	JUVENILE BOARD COMP., 424TH		100.00
DEPARTMENT TOTAL					6,602.62
0452-DISTRICT ATTORNEY					
BURNET COUNTY TREASURER	70397	A	AUGUST 2019 DIST ATTORNEY		21,156.96
DEPARTMENT TOTAL					21,156.96
0453-JUVENILE PROBATION					
JUVENILE PROBATION DEPT	70413	A	SEPTEMBER 2019		4,470.98
DEPARTMENT TOTAL					4,470.98
0500-COURTHOUSE EXPENSES					
BILL'S LOCK & KEY	70463	A	INV#20933 LEC		174.00
BLANCO COUNTY APPRAISAL DIST	70388	A	4TH QUARTER 2019		23,837.41
CANON FINANCIAL SERVICES, INC.	70442	A	INV #20548311 DIST CLERK		142.35
CANON FINANCIAL SERVICES, INC.	70443	A	INV #20548312 JP 4		47.73
CANON FINANCIAL SERVICES, INC.	70444	A	INV #20548313 LEC		47.73
CANON FINANCIAL SERVICES, INC.	70445	A	INV #20548314 TAC		36.65
CANON FINANCIAL SERVICES, INC.	70446	A	INV #20548315 EXTENSION		47.54

DEPARTMENT					
NAME-OF-VENDOR	INVOICE-Nº	S	DESCRIPTION-OF-INVOICE	AMOUNT	
CANON FINANCIAL SERVICES, INC.	70447	A	INV #20548316 CO CLERK	118.46	
CANON FINANCIAL SERVICES, INC.	70448	A	INV #20548317 DIST CLERK	137.53	
CANON FINANCIAL SERVICES, INC.	70449	A	INV #20548318 JP 1	48.15	
CANON FINANCIAL SERVICES, INC.	70450	A	INV #20548319 LEC	83.52	
CANON FINANCIAL SERVICES, INC.	70451	A	INV #20548320 MAILROOM	496.22	
CANON FINANCIAL SERVICES, INC.	70452	A	INV #20548321 LEC	197.46	
CANON FINANCIAL SERVICES, INC.	70453	A	INV #20548322 UPSTAIRS	57.27	
CULLIGAN OF FREDERICKSBURG, TX	70471	A	ACCT#93609 LEC	155.00	
GRAVES HUMPHRIES, STAHL, LIMITED	70403	A	REPORT #COL005 JP4	592.88	
GVTC	70404	A	CUST #180499 SOUTH ANNEX	348.94	
GVTC	70405	A	CUST #180499 SOUTH ANNEX	109.91	
GVTC	70408	A	CUST #180499 PCT 1 & PCT 4	74.96	
HUTTO & DALCHAU INSURANCE AGENCY	70550	A	ACCT #487 LEND BOND	92.50	
ITZ ELECTRIC, INC.	70489	A	INV#19770 LEC	1,333.95	
ITZ ELECTRIC, INC.	70490	A	INV#19769 N. ANNEX	647.52	
JOHNSON CITY PUBLICATIONS LP	70491	A	INV#8/28/2019 PCT 3 PAVING BID	148.50	
JOHNSON CITY PUBLICATIONS LP	70492	A	INV#9/4/2019 PLAT REV L.O.T.H.	63.75	
JOHNSON CITY PUBLICATIONS LP	70493	A	INV#9/4/2019 PLAT REV ROCKIN J	67.50	
LIESMANN MOWING	70498	A	INV#30084562	250.00	
LIESMANN MOWING	70499	A	INV#30084563	100.00	
ODIORNE FEED/RANCH SUPPLY INC	70503	A	INV#150483 CH	7.50	
ODIORNE FEED/RANCH SUPPLY INC	70504	A	INV#150013 LEC	123.00	
PEDERNALES ELECTRIC COOP	70418	A	INV #955	3,352.03	
QUILL CORPORATION	70522	A	INV#9882922, CR 659384	54.04	
QUILL CORPORATION	70523	A	INV#9871018 CH	12.99	
SPICEWOOD PLUMBING, INC.	70532	A	INV#19-22513 LEC	150.00	
STEPHANIE LARSEN, CSR, RPR	70422	A	PUBLIC HEARING	60.00	
TERMINIX	70425	A	ANNEX	100.00	
TERMINIX	70426	A	OLD JAIL	47.00	
TERMINIX	70427	A	SOUTH ANNEX	85.00	
TERMINIX	70428	A	LEC	136.00	
TEXAS WIRELESS INTERNET	70429	A	PCT 4	5.00	
VERTICAL BRIDGE TOWER II, LLC	70433	A	INV #00050481	637.60	
WB PLUMBING	70549	A	INV#101121 CH	375.00	
DEPARTMENT TOTAL				34,602.59	
0520-JUSTICE OF THE PEACE #4					
NORTHEAST TEXAS DATA CORP.	70416	A	REPORT #CAS017 JP 4	76.00	
DEPARTMENT TOTAL				76.00	
0550-RECYCLING COORDINATOR					
ALTERNATIVE ENVIRONMENTAL & RECYCLI	70456	A	GENERATOR #003791 RECYCLING	1,200.00	
STALEY ENTERPRISES	70533	A	INV#92756 RECYCLING	1,974.96	
DEPARTMENT TOTAL				3,174.96	
0560-GENERAL FUND CAPITAL EQUIPMENT					
GOTTS CUSTOM FLOORS	70482	A	INV#1619 CH	19,043.23	
DEPARTMENT TOTAL				19,043.23	
FUND TOTAL				115,418.31	



DEPARTMENT	NAME-OF-VENDOR	INVOICE-NO	S	DESCRIPTION-OF-INVOICE	AMOUNT
-----					
0540-R&B PCT #1					
	ERGON ASPHALT AND EMULSIONS, INC	70474	A	INV#9402123624 PCT 1	2,375.00
	GVTC	70407	A	CUST #180499 PCT 1	39.44
	KIRK FELPS	70496	A	INV#74043 PCT 1	83.96
	PATHMARK TRAFFIC PRODCT/TX INC	70508	A	INV#3609 PCT 1	1,368.00
	THIRD COAST DISTRIBUTING, LLC	70542	A	INV#785406 PCT 1	22.99
	THIRD COAST DISTRIBUTING, LLC	70543	A	INV#785409 PCT 1	20.98
	THIRD COAST DISTRIBUTING, LLC	70544	A	INV#785580 PCT 1	25.97
	THIRD COAST DISTRIBUTING, LLC	70545	A	INV#786079 PCT 1	85.24
	THIRD COAST DISTRIBUTING, LLC	70546	A	INV#786104 PCT 1	5.68
	THOMAS WEIR	70548	A	REIMBURSEMENT	134.22
	UNIFIRST CORPORATION	70438	A	ACCT #512256 PCT 1	57.14
	DEPARTMENT TOTAL				4,218.62
0550-R&B PCT #2					
	ARMADILLO MATERIALS LLC	70457	A	INV#0003471-IN PCT 2	820.51
	ARMADILLO MATERIALS LLC	70458	A	INV#0003563-IN PCT 2	980.14
	ARMADILLO MATERIALS LLC	70459	A	INV#0003564-IN PCT 2	857.99
	ARMADILLO MATERIALS LLC	70460	A	INV#0003565-IN PCT 2	384.53
	ARMADILLO MATERIALS LLC	70461	A	INV#0003566-IN PCT 2	758.29
	ODIORNE FEED/RANCH SUPPLY INC	70506	A	INV#149872 PCT 2	10.00
	PETERSON TIRE	70520	A	INV#JC31186 PCT 2	98.75
	THIRD COAST DISTRIBUTING, LLC	70536	A	INV#782440 PCT 2	64.87
	THIRD COAST DISTRIBUTING, LLC	70537	A	INV#782871 PCT 2	23.77
	THIRD COAST DISTRIBUTING, LLC	70538	A	INV#782977 PCT 2	13.98
	THIRD COAST DISTRIBUTING, LLC	70539	A	INV#783942 PCT 2	146.48
	THIRD COAST DISTRIBUTING, LLC	70540	A	INV#784494 PCT 2	23.98
	THIRD COAST DISTRIBUTING, LLC	70541	A	INV#784759 PCT 2	29.98
	UNIFIRST CORPORATION	70439	A	ACCT #512256 PCT 2	97.76
	DEPARTMENT TOTAL				4,311.03
0560-R&B PCT #3					
	BLANCO COUNTY TAX ASSESSOR-COLLECT	70464	A	LICENSE TAG #9054511 PCT 3	7.50
	GARY HOBBS TIRE SERVICE	70486	A	INV#16715 PCT 3	7.00
	GARY HOBBS TIRE SERVICE	70487	A	INV#16963 PCT 3	20.00
	ODIORNE FEED/RANCH SUPPLY INC	70505	A	INV#150917 PCT 3	1,539.96
	RUVALCABAS PAVING CO	70527	A	OLD SPICEWOOD RD PCT 3	48,369.60
	SKID STEER ATTACHMENTS OF TEXAS	70530	A	INV#3034 PCT 3	9,531.65
	SKID STEER ATTACHMENTS OF TEXAS	70531	A	INV#3035 PCT 3	1,068.00
	STROEHER & OLFERS INC	70535	A	INV#194561 PCT 3	1,686.36
	UNIFIRST CORPORATION	70440	A	ACCT #512256 PCT 3	65.78
	DEPARTMENT TOTAL				62,295.85
0570-R&B PCT #4					
	ARMADILLO MATERIALS LLC	70462	A	INV#0003567-IN PCT 4	371.40
	GVTC	70406	A	CUST #180499 PCT 4	37.93
	KIRK FELPS	70497	A	INV#74120 PCT 4	8.46
	PATHMARK TRAFFIC PRODCT/TX INC	70509	A	INV#3858 PCT 4	2,312.95
	PAUL GRANBERG REIMBURSEMENT ACCOUNT	70510	A	REIMBURSEMENT	164.65
	THIRD COAST DISTRIBUTING, LLC	70547	A	INV#786003 PCT 4	13.98
	UNIFIRST CORPORATION	70441	A	ACCT #512256 PCT 4	88.35
	DEPARTMENT TOTAL				2,997.72
	FUND TOTAL				73,823.22

---

DEPARTMENT	NAME-OF-VENDOR	INVOICE-NØ	S	DESCRIPTION-OF-INVOICE	AMOUNT
0400-RECORDS MANAGEMENT CLERK EXPENSES					
	PROFESSIONAL PLOTTER TECHNOLOGIES	70419	A	INV #55125 CO CLERK	96.40
	DEPARTMENT TOTAL				96.40
	FUND TOTAL				96.40

---

DEPARTMENT				
NAME-OF-VENDOR	INVOICE-NO	S	DESCRIPTION-OF-INVOICE	AMOUNT
0400-CHILD SAFETY FUND EXPENSES				
BLANCO CO CHILD PROTECTION BD	70394	A	REIMBURSE FOR EXPENSES	6,486.00
DEPARTMENT TOTAL				6,486.00
FUND TOTAL				6,486.00

---

DEPARTMENT	NAME-OF-VENDOR	INVOICE-NO	S	DESCRIPTION-OF-INVOICE	AMOUNT
0400-JAIL INMATE COMMISSARY EXPENSES					
	SAN ANTONIO EXPRESS NEWS	70528	A	ACCT#570787487 LEC	88.95
	DEPARTMENT TOTAL				88.95
	FUND TOTAL				88.95



---

DEPARTMENT	NAME-OF-VENDOR	INVOICE-NC	S	DESCRIPTION-OF-INVOICE	AMOUNT
0400-INTEREST & SINKING EXPENSES					
	WELLS FARGO BANK, N.A.	70434	A	INV #1717149	550.00
	DEPARTMENT TOTAL				550.00
	FUND TOTAL				550.00

---

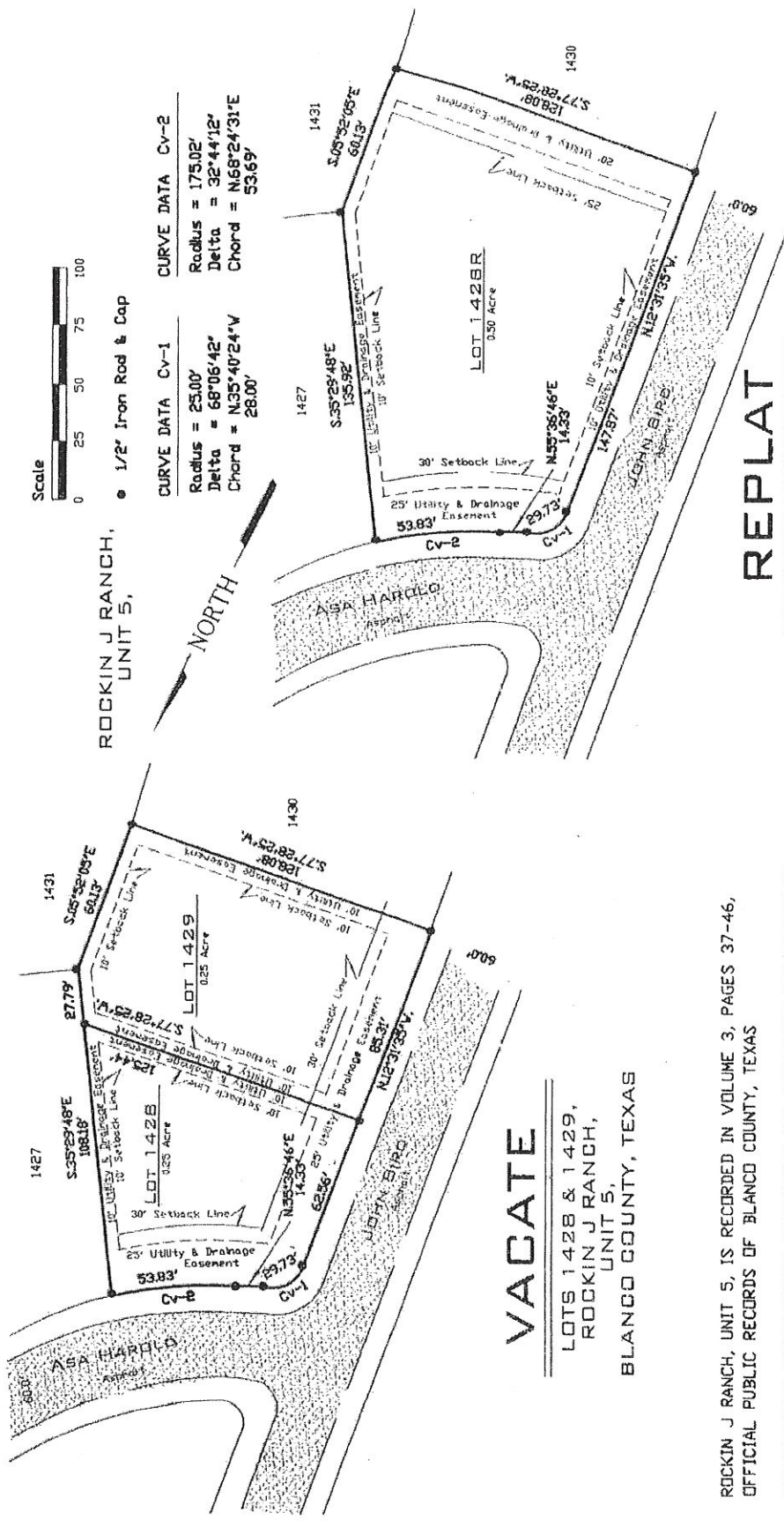
DEPARTMENT					
NAME-OF-VENDOR	INVOICE-NC	S	DESCRIPTION-OF-INVOICE		AMOUNT
				GRAND TOTAL	196,462.88



• 1/2" Iron Rod & Cap

**CURVE DATA Cv-1**  
 Radius = 25.00'  
 Delta = 68°06'42"  
 Chord = N35°40'24"W  
 28.00'

**CURVE DATA Cv-2**  
 Radius = 175.02'  
 Delta = 32°44'12"  
 Chord = N68°24'31"E  
 53.69'



# VACATE

LOTS 1428 & 1429,  
 ROCKIN J RANCH,  
 UNIT 5,  
 BLANCO COUNTY, TEXAS

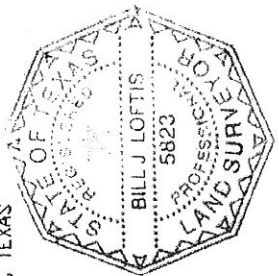
# REPLAT

ESTABLISHING LOT 1428B,  
 ROCKIN J RANCH,  
 UNIT 5,  
 BLANCO COUNTY, TEXAS

ROCKIN J RANCH, UNIT 5, IS RECORDED IN VOLUME 3, PAGES 37-46,  
 OFFICIAL PUBLIC RECORDS OF BLANCO COUNTY, TEXAS

RESERVATIONS, RESTRICTIONS, COVENANTS AND EASEMENTS ARE RECORDED  
 IN VOLUME 305, PAGES 836-847, VOLUME 342, PAGE 42, VOLUME 380,  
 PAGE 956, VOLUME 428, PAGE 93, AND VOLUME 455, PAGES 122-125,  
 OFFICIAL PUBLIC RECORDS OF BLANCO COUNTY, TEXAS

I HEREBY CERTIFY THAT THIS SURVEY IS TRUE  
 AND CORRECT TO THE BEST OF MY KNOWLEDGE,  
 AND IS BASED ON A SURVEY DONE ON THE GROUND,  
 UNDER MY DIRECTION AND SUPERVISION, THIS  
 THE 29TH DAY OF JULY, 2019

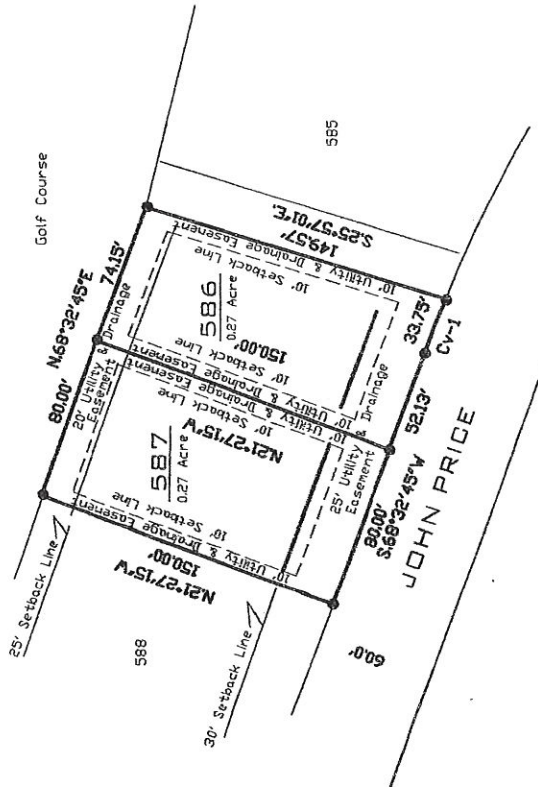


*Bill J. Loftis*

BILL J. LOFTIS  
 REGISTERED PROFESSIONAL LAND SURVEYOR  
 LICENSE NUMBER 5823

DWR: Bill Loftis
CHK: Bill Loftis
Job# 190729-1
Date: 7/29/2019
FB # 41

**Comal Hills Surveying**  
 3200 Puter Creek Road  
 Spring Branch, Texas  
 78070  
 (830) 228-5571  
 cbs@gvtc.com



# VACATE

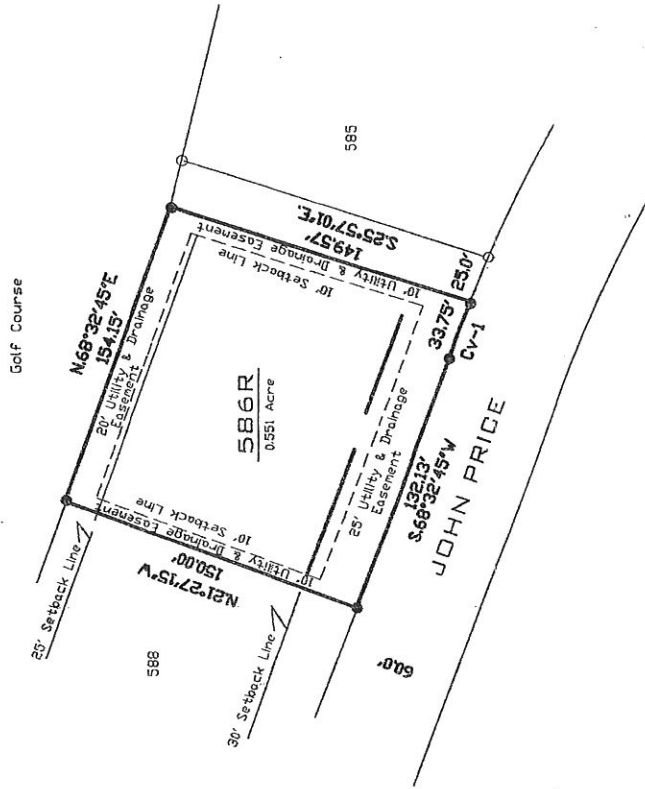
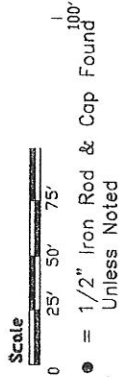
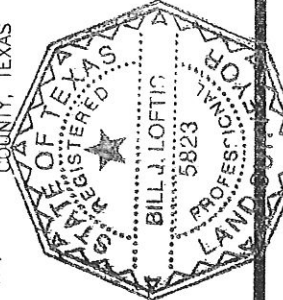
LOTS 586 & 587,  
ROCKIN J RANCH,  
UNIT 2,  
BLANCO COUNTY, TEXAS

ADDRESS: 605 JOHN PRICE  
BLANCO, TEXAS 78606

THIS PROPERTY DOES NOT FALL WITHIN A  
"SPECIAL FLOOD HAZARD AREA" AS SHOWN  
ON FEMA MAP 48031C0115C, NOT PRINTED

I HERE BY CERTIFY THAT THIS SURVEY IS TRUE  
AND CORRECT TO THE BEST OF MY KNOWLEDGE,  
AND IS BASED ON A SURVEY DONE ON THE GROUND,  
UNDER MY DIRECTION AND SUPERVISION, THIS  
THE 8TH DAY OF AUGUST, 2019

*Bill J. Loftis*  
BILL J. LOFTIS  
REGISTERED PROFESSIONAL LAND SURVEYOR  
LICENSE NUMBER 5823



# REPLAT

ESTABLISHING LOT 586R,  
ROCKIN J RANCH,  
UNIT 2,  
BLANCO COUNTY, TEXAS

ROCKIN J RANCH, PHASE 2, IS RECORDED IN VOLUME 1,  
PAGES 342-352, PLAT RECORDS OF BLANCO COUNTY, TEXAS

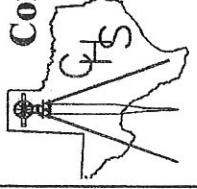
RESERVATIONS, RESTRICTIONS, COVENANTS AND EASEMENTS  
ARE RECORDED IN VOLUME 305, PAGE 836, VOLUME 305,  
PAGE 848, VOLUME 342, PAGE 42, VOLUME 380, PAGE 956,  
VOLUME 428, PAGE 93, AND VOLUME 455, PAGE 122, OFFICIAL  
PUBLIC RECORDS OF BLANCO COUNTY, TEXAS

ALL ROADS IN ROCKIN J RANCH, UNITS 1-4, CONVEYED TO  
ROCKIN J RANCH MAINTENANCE CORP., RECORDED IN VOLUME  
354, PAGE 818, OFFICIAL PUBLIC RECORDS OF BLANCO COUNTY,  
TEXAS

THIS PROPERTY HAS AN INGRESS AND EGRESS EASEMENT RECORDED  
IN VOLUME 359, PAGE 900, OFFICIAL PUBLIC RECORDS OF BLANCO  
COUNTY, TEXAS

## Comal Hills Surveying

3200 Puter Creek Road  
Spring Branch, Texas  
78070  
(830) 228-5571  
chs@gytc.com



DWN: Bill Loftis  
CHK: Bill Loftis  
Job#: 190808-1  
Date: 8/8/2019  
FB # 41



September 10, 2019


Blanco County Commissioners

Dear Sirs,

For the past several years it has been my privilege to serve on The Blanco County Child Protection and Family Advocacy Board. It has been a moving and rewarding experience, but I believe the time has come for me to tender my resignation. I truly appreciate the honor and I will carry the memories of the amazing work the board does with me for the rest of my life.

Thank you for allowing me the honor of serving on such a worthwhile and necessary board.

Sincerely,

  
Wendy Sultemeier

STATE OF TEXAS §

COUNTY OF BLANCO §

ORDER APPOINTING ESD BOARD MEMBERS

**WHEREAS**, An emergency services district may be organized as provided by Article III, Section 48-e, of the Texas Constitution, to protect life and health; and

**WHEREAS**, Health and Safety Code Title 9, Subtitle B, Chapter 775 concerns the creation and appointment of a board of directors by the County Commissioners Court; and

**WHEREAS**, Blanco County Commissioners Court sanctioned the creation of two separate emergency services districts to serve the citizens of Blanco County; and

**WHEREAS**, Section 775.034 of Health and Safety Code Title 9, Subtitle B requires a five-member board of emergency services commissioners to serve as the district's governing body; and

**WHEREAS**, Section 775.034(d) requires the Commissioners Court to appoint a successor for each emergency services board member whose term has expired.

**NOW, IT IS THEREFORE ORDERED**, that effective this 24th of September, 2019, the Blanco County Commissioners Court has appointed Steve Scheffe as a member of the South Blanco County Emergency Services District to serve the remaining term beginning October 1, 2019 through December 31, 2020 to replace Elaine Cross.

**ORDERED AND SIGNED** this 24th day of September 2019.

---

Brett Bray, Blanco County Judge

ATTEST:

---

Laura Walla, County Clerk

# 16TL

## SUPER DUTY TILT BED EQUIPMENT TRAILER

# BigTex

TRAILERS



GVWR: 17,500#



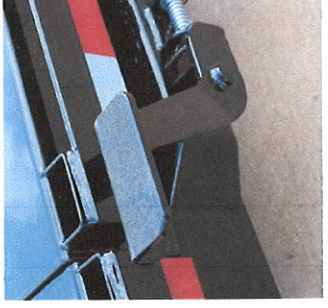
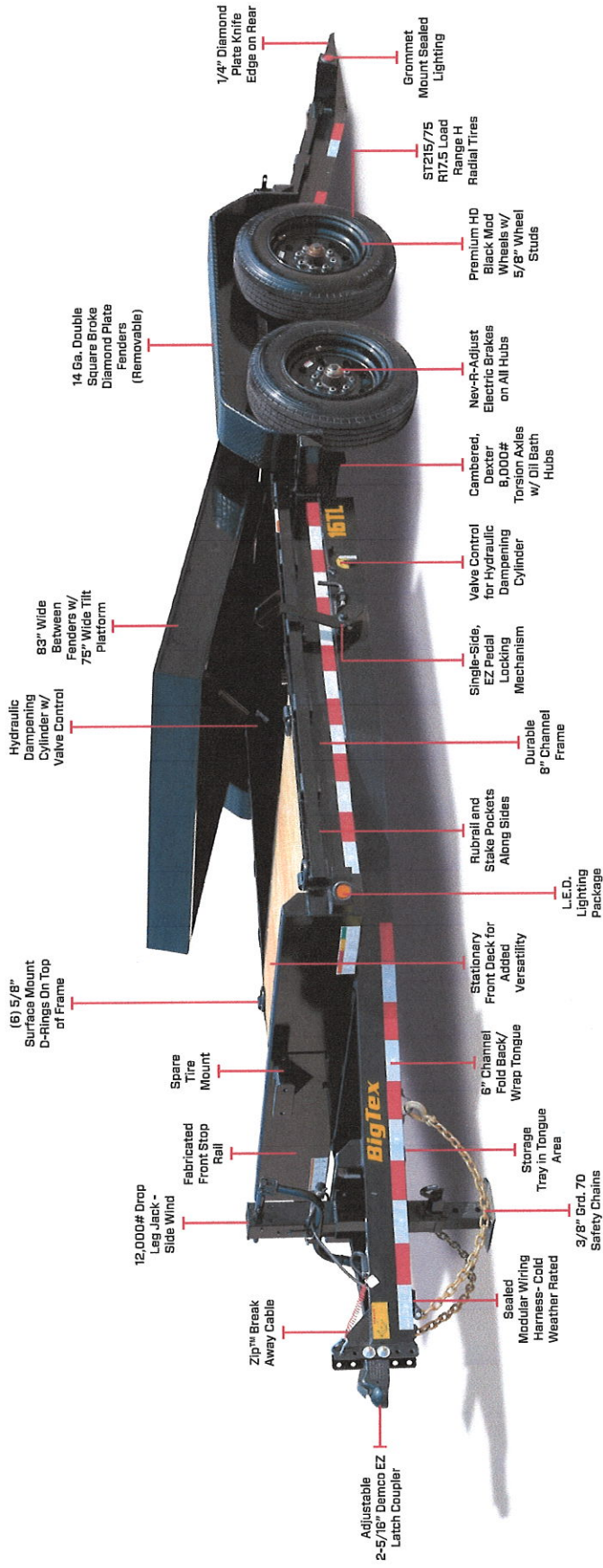
EMPTY WEIGHT: 5,000# (22' Model)



AVAILABLE LENGTHS: 20' - 22' | BED WIDTH: 83" WIDE (Between Fenders)

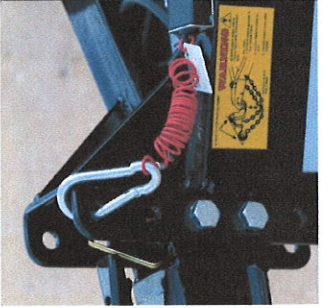


COUPLER: Adj. 2-5/16" DEMCO EZ Latch



### EZ PEDAL LATCHING SYSTEM AND CONTROL VALVE

The 16TL is equipped with an easy-to-use EZ Pedal Latching System as well as a control valve to lock the hydraulic dampening system.



### ZIP™ BREAK AWAY CABLE

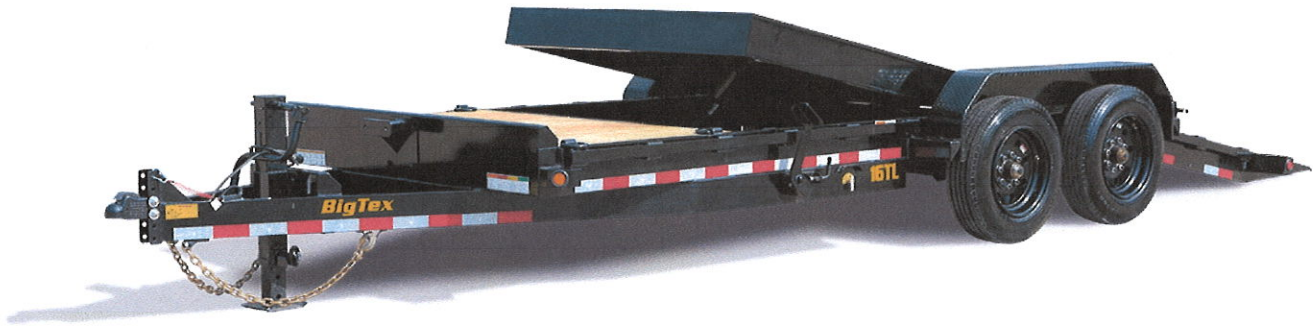
For added convenience and safety, the 16ET is equipped with an innovative Zip Break Away Cable.



### VERSATILE CARGO CONTROL

The 16TL not only features a rubrail and stake pockets along each side, but (6) 5/8 inch D-Rings provide additional cargo control solutions and versatility.



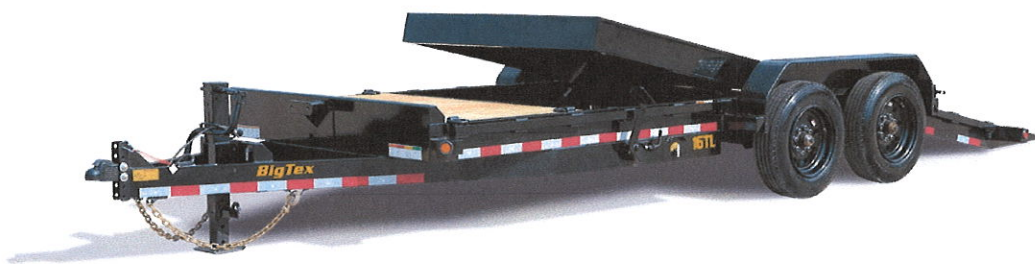


# 16TL

## Super Duty Tilt Bed Equipment Trailer

The 16TL Super Duty Tilt Bed Equipment Trailer from Big Tex Trailers is a stationary platform tilt deck trailer that has a four foot stationary deck on the front (six feet on the 22 length). Like the 14TL, this model is designed to haul medium duty, low profile equipment.

## SPECS...





<b>AXLE</b>	(2) 8,000# Oil Bath w/ Electric Brakes	<b>G.V.W.R.</b>	17,500#
<b>JACK</b>	12,000# Drop Leg Jack-Side Wind	<b>ELEC. PLUG</b>	7-Way RV
<b>TIRE</b>	ST215/75 R-17.5 Load Range H	<b>HITCH TYPE</b>	Bumper Pull
<b>FLOOR</b>	2" Treated Pine or Douglas Fir*	<b>SUSPENSION</b>	Torsion
<b>FRAME</b>	8" Channel	<b>TONGUE/NECK</b>	6" Channel Fold Back/Wrap Tongue, 10" I-Beam Neck on GN
<b>WHEEL</b>	17.5" x 6.75"; Black Mod 8 Bolt	<b>CROSSMEMBERS</b>	3" Channel on 16" Centers
<b>FINISH</b>	Superior Quality Finish is Applied for a Highly Decorative and Protective Finish.	<b>FINISH (Prep)</b>	Steel is Cleaned to Ensure a Professional Smooth Finish.
<b>LIGHTS</b>	L.E.D. D.O.T. Stop, Tail, Turn & Clearance	<b>SAFETY CHAINS</b>	3/8" Grd. 70 w/Safety Latch Hook (2 ea)
<b>COUPLER</b>	Adjustable 2-5/16" 20,000# Demco EZ Latch	<b>FRONT STOP RAIL</b>	3/16" Fabricated Front Stop Rail
<b>FENDERS</b>	9" x 72" Double Broke Diamond Plate w/Back (Removable)	<b>G.A.W.R. (Ea. Axle)</b>	8,000#

## MODELS

MODEL	WEIGHT	DESCRIPTION
16TL-20	4,760#	83" x 20' (16' + 4') Super Duty Tilt Bed Trailer
16TL-20GN	5,560#	83" x 20' (16' + 4') Super Duty Gooseneck Tilt Bed Trailer
16TL-22	5,000#	83" x 22' (16' + 6') Super Duty Tilt Bed Trailer
16TL-22GN	5,800#	83" x 22' (16' + 6') Super Duty Gooseneck Tilt Bed Trailer

## & FEATURES

### GROMMET MOUNT SEALED LIGHTING

LED lighting is brighter and lasts longer. Located on the side the framing or in protected channels, with access to junctures.

### L.E.D. LIGHTING PACKAGE

LED lighting is brighter and lasts longer. Located on the side the framing or in protected channels, with access to junctures.

### 17.5" RADIAL TIRES

### EZ LUBE HUBS

to maintain and completely submersible with no disassembly required.

### DEXTER BRAND TORSION AXLES

Dexter Axles outperform all other torsion axles. They are safe and automatically adjust to proper tire pressure.

### NEV-R-ADJUST ELECTRIC BRAKES ON ALL HUBS

### THE 16TL ALSO COMES EQUIPPED WITH:

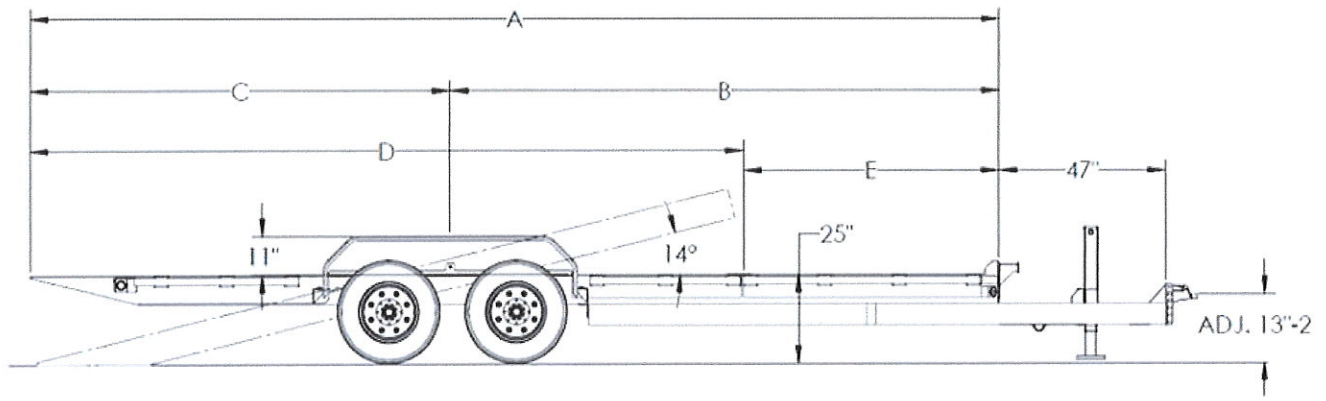
- Adjustable 2-5/16" Demco Coupler in Channel
- Rubrail and Stake Pockets Along Sides
- (6) 5/8" Surface Mount D-Rings On Top of Frame
- Adjustable 2-5/16" Demco EZ Latch Coupler
- Fold Back/Wrap Tongue
- 12,000# Drop Leg Jack-Side Wind
- Dual Jacks & Front Toolbox on Gooseneck Model
- Fabricated Front Stop Rail
- Dexter D8ON 8,000# Torsion Axles
- Nev-R-Adjust Electric Brakes on All Hubs
- Cambered, Oil Bath Axles
- Complete Break-A-Way System w/Charger
- Zip Breakaway Cable

- 14 Ga. Double Square Broke Diamond Plate Fenders (Removable)
- Single-Side, EZ Pedal Locking Mechanism
- Stationary Front Deck for Added Versatility
- Unique Two Piece Main Frame
- Full 83" Wide Bed Between Fenders
- Tilt Platform is 75" Wide
- Hydraulic Dampening Cylinder w/ Valve Control
- 1/4" Diamond Plate Knife Edge on Rear
- Storage Tray in Tongue Area
- Grommet Mount Sealed Lighting
- L.E.D. Lighting Package
- Sealed Modular Wiring Harness
- 17/5" Radial Tires
- 5/8" Wheel Studs
- Spare Tire Mount (Front)

*Big Tex Trailers reserves the right to change price, design, material and/or specifications without notice or obligation.*

## OPTIONAL EQUIPMENT

<b>CATEGORY</b>	<b>DESCRIPTION</b>
<b>BODY</b>	3/16" Diamond Plate Steel Floor
<b>BODY</b>	Blackwood Rubber Infused Floor
<b>BRAKES</b>	Hydraulic Surge Brakes 2 Axes w/Adjustable Demco Actuator
<b>CARGO CONTROL</b>	Additional B40 5/8" D-Ring
<b>CARGO CONTROL</b>	Recessed D-Ring in Floor (Steel Floor Only)
<b>COUPLER</b>	Adjustable Pintle in Channel in Lieu of Coupler
<b>TIRE/WHEEL</b>	Spare Tire (ST215/75 R-17.5 LR-H)



**BLANCO COUNTY  
REQUEST FOR A LINE-ITEM TRANSFER**

9-18-19  
Funds are available.  
B

DATE: 17-Sep-19

TO: HONORABLE COMMISSIONERS COURT OF BLANCO COUNTY, TEXAS

FROM: Tommy Weir Blanco County Commissioner

DEPARTMENT Precinct1 Road & Bridge

I SUBMIT TO YOU FOR YOUR CONSIDERATION, THE FOLLOWING LINE ITEM TRANSFERS:

FUND	LINE ITEM DESCRIPTION	LINE ITEM #	AMOUNT
FROM: <u>Paving</u>	<u>Paving</u>	<u>15-540-324</u>	<u>\$5,000.00</u>
TO: <u>aint. Of Jnt. Equip</u>		<u>15-540-327</u>	<u>\$5,000.00</u>

2 WAY SPLIT PRECINCT 1 & 4

Reason for request:

Purchase of a equipment Trailer

Note: This change is the budget for county purposes is in accordance with 111.011 Changes in Budget for County Purposes" of the Local Government Code.

  
Department Head Signature

Attest: County Clerk  
(if Commissioners' Court Action)

Co Judge/Commissioners' Court Approval  
(as needed)

"See Attached"



**BLANCO COUNTY  
REQUEST FOR A LINE-ITEM TRANSFER**

9-18-19  
Funds are available.  
8

DATE: 9-18-19

TO: HONORABLE COMMISSIONERS COURT OF BLANCO COUNTY, TEXAS

FROM: PAUL GRANBERG

DEPARTMENT R&B P&4

I SUBMIT TO YOU FOR YOUR CONSIDERATION, THE FOLLOWING LINE ITEM TRANSFERS:

	FUND	LINE ITEM DESCRIPTION	LINE ITEM #	AMOUNT
FROM:	<u>312</u>	<u>FUEL</u>	<u>312</u>	<u>1000.00</u>
	<u>314</u>	<u>SIGNS</u>	<u>312</u>	<u>1662.62</u>
	<u>324</u>	<u>PAVING</u>	<u>324</u>	<u>2448.50</u>
TO:	<u>327</u>	<u>JOINT EQUIP</u>		<u>1000.00</u>
		<u>JOINT EQUIP</u>		<u>1662.62</u>
		<u>JOINT EQUIP</u>		<u>2448.50</u>

Reason for request:  
PURCHASE BIG TEX EQUIPMENT TRAILER

Note: This change is the budget for county purposes is in accordance with 111.011 Changes in Budget for County Purposes" of the Local Government Code.

Paul Granberg  
Department Head Signature

Attest: County Clerk  
(if Commissioners' Court Action)

Co Judge/Commissioners' Court Approval  
(as needed)



**ORDER OF APPOINTMENT OF ELECTION  
JUDGE TO A TWO-YEAR (UNEXPIRED) TERM  
SUPPLEMENTAL LIST**

The Commissioners Court of Blanco County does hereby appoint the following election presiding judge of the Early Voting Ballot Board (EVBB) to the unexpired term of the judge that had previously been appointed to serve a two-year term from September 1, 2019 through August 31, 2021, pursuant to Sec. 32.002 (e ), Texas Election Code.

Prec	Location	Address	Presiding Judge	
------	----------	---------	-----------------	--

EVBB Courthouse Annex- Conference Rm 101 E. Cypress

Brenda Brodbeck

It is hereby directed that this order be filed with the clerk of this court and that a copy be provided to the custodian of the election records for Blanco County.

The Elections Administrator is hereby instructed to send a notice of appointment to the presiding judge notifying her of the appointment in accordance with Section 32.009, Texas Election Code.

APPROVED AND PASSED this 24th day of September, 2019.

\_\_\_\_\_  
Hon. Brett Bray  
Blanco County Judge

\_\_\_\_\_  
Hon. Tommy Weir  
County Commissioner, Pct. 1

\_\_\_\_\_  
Hon. Emil Ray Uecker  
County Commissioner, Pct. 2

\_\_\_\_\_  
Hon. Chris Liesmann  
County Commissioner, Pct. 3

\_\_\_\_\_  
Hon. Paul Granberg  
County Commissioner, Pct. 4

Attest:


\_\_\_\_\_  
Hon. Laura Walla  
Blanco County Clerk

**SUPPLEMENTAL LIST**  
**OF EVBB PRESIDING JUDGE**  
**2019 - 2021**

I, Oscar Villarreal, Elections Administrator of Blanco County, do hereby submit this supplemental list for appointment to serve the unexpired two-year term as Early Voting Ballot Board Presiding Judge for elections conducted by the county as required upon receipt of a timely supplemental list submitted by the appropriate political party chair, pursuant to Sec. 32.002 (e ), Texas Election Code. The presiding judge appointed previously by the commissioners court could not fulfill her obligations.

Prec	Location	Address	Presiding Judge	
EVBB	Courthouse Annex- Conference Rm	101 E. Cypress	Brenda Brodbeck	

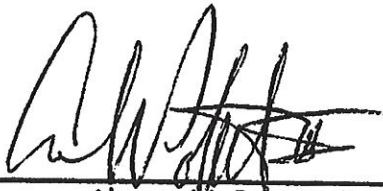
SUBMITTED this 17th day of September, 2019.

  
\_\_\_\_\_  
Oscar Villarreal  
Blanco County Elections Administrator

**BLANCO COUNTY REPUBLICAN PARTY  
SUPPLEMENTAL LIST  
OF PRESIDING JUDGES  
FOR THE EARLY VOTING BALLOT BOARD (EVBB)**

I, Alonzo M. Poteet III, Blanco County Republican Party Chair, do hereby submit this Supplemental List of person(s) for appointment to a two-year term as presiding judge in the specified position for elections conducted by the county, as required upon receipt of a timely list(s) submitted by the appropriate political party chair, pursuant to Sec. 32.002 (e), Texas Election Code.

Prec	Election Day Site	Address	Presiding Judge	
EV BB	Blanco County Courthouse Annex	101 E. Cypress	Brenda Brodbeck	



Alonzo M. Poteet III  
Chair, BCRP

8/26/19  
Date

## **CONTRACT FOR COURT COLLECTION SERVICES**

**STATE OF TEXAS**

**BLANCO COUNTY**

THIS CONTRACT is made and entered into by and between Blanco County, acting herein by and through its governing body, hereinafter called Client, and i3-Bearcat, LLC (dba Graves Humphries Stahl, LTD), hereinafter called GHS. All terms and conditions of the License Agreement between Client and i3-Bearcat, LLC (dba NET Data Corporation) are incorporated by reference, including but not limited to any warranties, disclaimer of warranties, and disclaimer of damages.

### **I.**

Client agrees to employ and does hereby employ GHS to enforce the collection of delinquent court fines, fees, court costs, restitution, debts and accounts receivable and other amounts in accordance with Article 103.0031, Texas Code of Criminal Procedure (hereinafter referred to in the agreement as "Fines and Fees").

This contract supersedes all prior oral and written agreements between the parties and can only be amended if done so in writing and signed by all parties. Furthermore, this contract cannot be transferred or assigned by either party without the written consent of all parties.

### **II.**

For purposes of this contract all Fines and Fees shall be referred to GHS when determined to be delinquent as provided for in Article 103.0031, Texas Code of Criminal Procedure. Client will provide GHS with GHS's preferred method of electronic access to the information necessary to collect the fees and fines that are subject to this contract through adequate ports and bandwidth necessary.

### **III.**

GHS is to refer all payments and correspondence directly to the courts that have assessed or levied the fees and fines being collected pursuant to this contract. GHS reserves the right to return all accounts not collected within one (1) year of referral by Client, as well as any accounts identified as being in bankruptcy. Upon return of these accounts, neither party will have any obligation to the other party to this contract. Client shall have the absolute right to recall any individual account if, in Client's sole discretion, Client determines it is in the best interest of justice.

### **IV.**

For the Collection of Fees and Fines, Client agrees to pay GHS, as compensation for the collection services provided the following fees:

- 1) Twenty percent (20%) of the imposed fees and fines on all Unadjudicated offenses committed on or before June 18, 2003.



- 2) Thirty percent (30%) of the imposed fees and fines on all adjudicated offenses regardless of the date of the offense as provided by Article 103.0031, Texas Code of Criminal Procedure.
- 3) Thirty percent (30%) of the imposed fees and fines on all Unadjudicated offenses occurring after June 18, 2003 as provided by Article 103.0031, Texas Code of Criminal Procedure.
- 4) In the event any fines and fees are disposed of through the performance of community service, credit for jail time served, or the discretionary removal of fines and fees pursuant to Article 45.0491, Texas Code of Criminal Procedure, no compensation shall be paid to GHS.

Client may require that the defendant reimburse the collection fee if approved by the County Commissioner's.

All compensations shall become the property of GHS at the time of payment. Client shall pay over said funds on a monthly basis by check.

#### **V.**

GHS agrees to use its best efforts to collect the delinquent accounts turned over to it and to provide advice to Client on the delinquent accounts as requested by Client.

#### **VI.**

This contract shall commence on the \_\_\_\_\_ day of \_\_\_\_\_, 2019, and be in effect for a period of five (5) years after which it shall automatically renew on an annual basis. Either party to this agreement shall have the right to terminate this agreement, without cause, after the initial or any subsequent term by giving the other party ninety (90) days written notice of their desire and intention to terminate; provided that GHS shall have an additional six (6) months to complete work on all cases turned over to GHS prior to the notice of termination. Notwithstanding the foregoing, if Client determines that GHS has violated state or federal laws in its collection efforts or has breached any term of this contract, Client may immediately terminate the contract and GHS shall immediately cease all collection efforts. Before terminating for cause, Client shall notify GHS of any breach of this contract or violation of the law and permit GHS to correct any such violation unless Client determines that the breach or violation cannot be corrected or would subject Client to liability.

#### **VII.**

This contract is made and is to be interpreted under the laws of the State of Texas. Venue for any disputes involving this contract shall be in the appropriate courts in Blanco County, Texas.

In the event that any provision(s) of this contract shall for any reason be held invalid, illegal or unenforceable, the invalidity, illegality or unenforceability of that provision(s) shall not affect any other provision(s) of this contract, and it shall further be construed as if the invalid, illegal or unenforceable provision(s) had never been a part of this contract.



**VIII.**

In consideration of the terms and compensation herein stated, GHS hereby accepts said employment and undertakes performance of said contract as set-forth above.

**IX.**

Every provision of this Agreement is intended to be severable. If any term or provision hereof is hereafter deemed by a Court to be illegal, invalid, void or unenforceable, for any reason or to any extent whatsoever, such illegality, invalidity, or unenforceability shall not affect the validity of the remainder of this Agreement, it being intended that such remaining provisions shall be construed in a manner most closely approximating the intention of the Parties with respect to the illegal, invalid, void or unenforceable provision or part thereof.

This contract is executed on behalf of Client by the presiding officer of its governing body who is authorized to execute this instrument by order heretofore passed and recorded in its minutes.

This contract may be executed in any number of counterparts, and each counterpart shall be deemed an original for all purposes. Signed facsimiles shall be binding and enforceable.

WITNESS the signature of all parties hereto this the 24th day of September, 2019.

AGREED TO:

I3-Bearcat, LLC  
(Graves Humphries Stahl, Ltd.)

**Blanco County**

Signature: \_\_\_\_\_

Signature: \_\_\_\_\_

Print Name: \_\_\_\_\_

Print Name: Brett Bray

Title: \_\_\_\_\_

Title: Blanco County Judge

Date: \_\_\_\_\_

Date: 9-24-19

## RESOLUTION

A RESOLUTION REGARDING A FINANCING AGREEMENT FOR THE PURPOSE OF FINANCING  
**"CAPITAL EQUIPMENT"**

WHEREAS, Blanco County (the "Issuer") desires to enter into a Financing Contract No. 8808, by and between Blanco County and Government Capital Corporation ("GCC"), for the purpose of financing "Capital Equipment". The Issuer desires to designate this Finance Contract as a "qualified tax-exempt obligation" of the Issuer for the purposes of Section 265 (b) (3) of the Internal Revenue Code of 1986, as amended.

NOW THEREFORE, BE IT RESOLVED BY BLANCO COUNTY:

Section 1. That the Issuer will enter into a Finance Contract with GCC for the purpose of financing "Capital Equipment".

Section 2. That the Financing Contract dated as of October 10, 2019, by and between Blanco County and GCC is designated by the Issuer as a "qualified tax-exempt obligation" for the purposes of Section 265 (b) (3) of the Internal Revenue Code of 1986, as amended.

Section 3. That the Issuer designates Brett Bray, County Judge or their designee, as the authorized signer of the Financing Contract Number 8808 dated October 10, 2019, by and between Blanco County and GCC as well as any other ancillary exhibit, certificate, or documentation needed for the Contract.

Section 4. That should the need arise, if applicable, the County will use loan proceeds for reimbursement of expenditures related to the Property, within the meaning of Treasury Regulation § 1.1502, as promulgated under the Internal Revenue Code of 1986, as amended.

This resolution has been PASSED upon Motion made by Commissioner \_\_\_\_\_, seconded by Commissioner \_\_\_\_\_ by a vote of \_\_\_\_\_ to \_\_\_\_\_ and is effective this 24<sup>th</sup> day of September, 2019.

Issuer: Blanco County

Witness Signature

\_\_\_\_\_  
Brett Bray, County Judge

\_\_\_\_\_  
Laura Walla, County Clerk



# PUBLIC PROPERTY FINANCE ACT CONTRACT

THIS Public Property Finance Act Contract **No.8808** (hereafter referred to as the "Finance Contract") is dated as of **October 10, 2019**, by and between **Government Capital Corporation**, a Texas corporation (herein referred to as "GCC"), and the **Blanco County**, a political sub-division or agency of the State of Texas (hereinafter referred to as the "Issuer").

WITNESSETH: In furtherance of the providing by GCC of financing to the Issuer in connection with the Issuer's acquisition from Various Vendors that is more fully described on EXHIBIT A attached hereto (the "Property"), and in consideration of the mutual covenants and conditions hereinafter set forth, pursuant to the provisions of the Public Property Finance Act, Chapter 271, Subchapter A, Texas Local Government Code, as amended (the "Act"), the parties agree as follows:

**1. Term and Payments.** The Issuer hereby covenants and agrees to pay to the order of GCC and GCC's successors and assigns those principal and interest installment amounts in those sums set forth on EXHIBIT B attached hereto (the "Payments") on or before those dates per installment that are more fully set forth on EXHIBIT B (the "Payment Dates"). It is acknowledged and understood that GCC may assign its rights hereunder to a third party and that notice of said assignment shall be provided to the Issuer and that the Issuer, thereafter, shall look to and consider said assignee as the party to whom all of the Issuer's duties hereunder are owed. The obligation of the Issuer to make the Payments shall not be subject to set-off, counterclaim, or recoupment to the extent permitted by law. The interest is calculated on the basis of a 30/360-day year on the unpaid principal amounts from the Schedule Date of the EXHIBIT B.

**2. Security, Levy of Taxes, Budgeting.**

(a) During the term of this Finance Contract, the Issuer covenants that prior to adopting a budget for any ensuing fiscal year it shall place in its proposed budget for such ensuing fiscal year an amount necessary to pay the Finance Contract Payments for such ensuing fiscal year, and that the final budget for each fiscal year shall set aside and appropriate out of Ad Valorem Taxes and other revenues and funds lawfully available therefore an amount sufficient to pay the Finance Contract Payments. The Issuer hereby agrees to assess and collect, a continuing direct annual Ad Valorem Tax on all taxable property within the boundaries of the Issuer, within the limitations prescribed by law, at a rate from year to year sufficient, together with such other revenues and funds lawfully available to the Issuer for the payment of the Payments, to provide funds each year to pay the Payments, full allowance being made for delinquencies and costs of collection. Such taxes and such revenues and funds in an amount sufficient to make the Payments are pledged to GCC and GCC's successors and assigns for such purpose as the same shall become due and payable under this Finance Contract.

(b) The Issuer waives all rights of set-off, recoupment, counterclaim and abatement against GCC and GCC's successors and assigns with respect to the amounts due under this Finance Contract, and the Issuer's obligation to pay amounts due under this Finance Contract is absolute and unconditional and not subject to set-off, recoupment, counterclaim or abatement for any reason whatsoever.

**3. Deposit into the Payment Fund.**

(a) Upon this Finance Contract taking effect the Issuer shall establish a Payment Fund, which shall be maintained by the Issuer as long as any Payments are unpaid. The Issuer hereby pledges the Payment Fund for the exclusive purpose of securing the Payments and shall apply the funds therein to the payment of Payments as such payments come due.

(b) Each year in which Payments come due, the Issuer shall, not later than the day preceding any such due date, deposit into the Payment Fund, from the Issuer's Ad Valorem taxes or other lawfully available funds (within the limits prescribed by law) an amount sufficient to make such payment. To the extent permitted by law, the Issuer hereby pledges its Ad Valorem tax as security for this obligation. To the extent required by the Texas Constitution, the Issuer agrees during each year of the term of this Finance Contract to assess and collect annually a sufficient sum to pay the greater of (1) interest on the debt created by this Finance Contract and a sinking fund of at least two percent of the principal amount of such debt, or (2) the payments required by Exhibit B attached hereto.

(c) The Payment Fund shall be depleted at least once a year except for a carryover amount not to exceed one twelfth (1/12) of the amount of the Payments expected to come due in the following year.

**4. Taxes.** The Issuer agrees to directly pay all taxes, insurance and other costs of every nature associated with its ownership of the Property.

**5. The Issuer's Covenants and Representations.** The Issuer covenants and represents as follows:

(a) The Issuer will provide an opinion of its counsel to the effect that, it has full power and authority to enter into this Finance Contract which has been duly authorized, executed, and delivered by the Issuer and is a valid and binding obligation enforceable in accordance with its terms, and all requirements for execution, delivery and performance of this Finance Contract have been, or will be, complied with in a timely manner;

(b) All Payments hereunder for the current fiscal period have been duly authorized and will be paid when due;

(c) There are no pending or threatened lawsuits or administrative or other proceedings contesting the authority for, authorization of performance of, or expenditure of funds pursuant to this Finance Contract;

(d) The information supplied and statements made by the Issuer in any financial statement or current budget prior to or contemporaneously with this Finance Contract are true and correct;

(e) The Issuer has complied or will comply with all bidding/proposal laws applicable to this transaction and the purchase of the Property.

(f) No contract, rental agreement, lease-purchase agreement, payment agreement or contract for purchase under the Act to which the Issuer has been a party at any time during the past ten (10) years has been terminated by the Issuer as a result of insufficient funds being appropriated in any Fiscal Year. No event has occurred which would constitute an event of default under any debt, revenue bond or obligation which the Issuer has issued during the past ten (10) years.

(g) The Issuer will pay the Payments due by check, wire transfer, or ACH only.



GOVERNMENT CAPITAL  
CORPORATION



**6. Use and Licenses.** The Issuer shall pay and discharge all operating and other expenses of every nature associated with its use of the Property. The Issuer shall obtain, at its expense, all registrations, permits and licenses, if any, required by law for the installation and operation of the Property.

**7. Maintenance.** The Issuer agrees to be solely responsible for all maintenance and operating costs of every nature associated with its ownership of the Property and the Issuer acknowledges that GCC or GCC's successors or assigns shall have no responsibility for the payment of any such costs.

**8. Damage to or Destruction of Property.** The Issuer shall bear the entire risk of loss, damage, theft, or destruction of the Property from any and every cause whatsoever, and no loss, damage, destruction, or other event shall release the Issuer from the obligation to pay the full amount of the payments or from any other obligation under this Finance Contract.

**9. No Warranty.** EXCEPT FOR REPRESENTATIONS, WARRANTIES, AND SERVICE AGREEMENTS RELATING TO THE PROPERTY MADE OR ENTERED INTO BY THE MANUFACTURERS OR SUPPLIERS OF THE PROPERTY, IF ANY, ALL OF WHICH ARE HEREBY ASSIGNED TO THE ISSUER, GCC HAS MADE AND MAKES NO REPRESENTATION OR WARRANTY, EXPRESS OR IMPLIED, AND ASSUMES NO OBLIGATION WITH RESPECT TO THE TITLE, MERCHANTABILITY, CONDITION, QUALITY OR FITNESS OF THE PROPERTY DESCRIBED IN EXHIBIT A FOR ANY PARTICULAR PURPOSE OR THE CONFORMITY OF THE PROPERTY TO SPECIFICATION OR PURCHASE ORDER. All such risks shall be borne by the Issuer without in any way excusing it from its obligations under this Finance Contract, and GCC shall not be liable for any damages on account of such risks. All claims or actions on any warranty so assigned shall be made or prosecuted by the Issuer, at its sole expense, upon prior written notice to GCC. GCC or its assigns may, but shall have no obligation whatsoever to, participate in a claim on any warranty. Any recovery under such a warranty shall be made payable jointly to both parties.

**10. Evidence of Indebtedness and Security Agreement.**

**(a)** An executed copy of this Finance Contract shall evidence the indebtedness of the Issuer as provided herein and shall constitute a security agreement pursuant to applicable law, with GCC, its successors or assigns as the secured party. The grants, lien, pledge and security interest of GCC, its successors or assigns created herein shall become effective immediately upon and from the Schedule Date of the EXHIBIT B, and the same shall be continuously effective for so long as any Finance Contract Payments are outstanding.

**(b)** A fully executed copy of this Finance Contract and the proceedings authorizing same shall be kept at all times and shall be filed and recorded as a security agreement among the permanent records of the Issuer. Such records shall be open for inspection to any member of the general public and to any individual, firm, corporation, governmental entity or other person proposing to do or doing business with, or having or asserting claims against the Issuer, at all times during regular business hours.

**(c)** If, in the opinion of counsel to the Issuer or to GCC, its successors or assigns, applicable law ever requires filings additional to the filing pursuant to subsection (b) of this section in order to preserve and protect the priority of the grants, assignments, lien, pledge and security interest of GCC, its successors or assigns created herein as to all Payments, then the Issuer shall diligently and regularly make such filings to the extent required by law to accomplish such result.

**11. Default and Remedies.**

**(a)** Each of the following occurrences or events for the purpose of this Finance Contract is hereby declared to be an Event of Default:

**(1)** the failure to make payment of the Payment when the same becomes due and payable; or  
**(2)** default in the performance or observance of any other covenant agreement or obligation of the Issuer, which default materially, adversely affects the rights of GCC or its successors or assigns, including, but not limited to, its prospect or ability to be repaid in accordance with this Finance Contract, and the continuation thereof for a period of 20 days after notice of such default is given by GCC or any successors or assigns of GCC to the Issuer.

**(b) Remedies for Default.**

**(1)** Upon the happening of any Event of Default, then and in every case GCC or its successors or assigns, or an authorized representative thereof, including, but not limited to, an attorney or trustee therefore, may proceed against the Issuer for the purpose of protecting and enforcing the rights of GCC or its successors or assigns under this Finance Contract, by mandamus or other suit, action or special proceeding in equity or at law, in any court of competent jurisdiction, for any relief permitted by law, including the specific performance of any covenant or agreement contained herein, or thereby to enjoin any act or thing that may be unlawful or in violation of any right of GCC or its successors or assigns or any combination of such remedies; provided that none of such parties shall have any right to declare the balance of the Finance Contract Payments to be immediately due and payable as a remedy because of the occurrence of an Event of Default.

**(2)** The exercise of any remedy herein conferred or reserved shall not be deemed a waiver of any other available remedy, and no delay or omission to exercise any right or power occurring upon any Event of Default shall impair any such right or power or be construed to be a waiver thereof and all such rights and powers may be exercised as often as may be deemed expedient.

**(c) Remedies Not Exclusive.**

**(1)** No remedy herein conferred or reserved is intended to be exclusive of any other available remedy or remedies, but each and every such remedy shall be cumulative and shall be in addition to every other remedy given hereunder or under this Finance Contract or now or hereafter existing at law or in equity; provided, however, that notwithstanding any other provision of this Finance Contract, the right to accelerate the debt evidenced by this Finance Contract shall not be available as a remedy because of the occurrence of an Event of Default.

**12. Assignment.** Without GCC's prior written consent, the Issuer will not either **(a)** assign, transfer, pledge, hypothecate, grant any security interest in or otherwise dispose of this Finance Contract or the Property or any interest in this Finance Contract or the Property; or **(b)** sublet or lend the Property or permit it to be used by anyone other than the Issuer or the Issuer's employees and other authorized users. GCC may assign its rights, title and interest in and to this Finance Contract, and any other documents executed with respect to this Finance Contract and/or grant or assign a security interest in this Finance Contract, in whole or in part. Such successors and assigns of GCC shall have the right to further grant or assign a security interest in this Finance Contract, as well as the rights to Payments hereunder, in whole or in part, to any third party. No assignment or reassignment of GCC's rights, title or interest in this Finance Contract shall be effective with regard to the Issuer unless and until the Issuer shall have received a copy of the document by which the assignment or reassignment is made, disclosing the name and address of such assignee. The Issuer shall maintain written records of any assignments of the Finance Contract.



**13. Personal Property.** The Property is and shall at all times be and remain personal property, and will not be considered a fixture to any real property.

**14. GCC's Right to Perform for The Issuer.** If the Issuer fails to make any payment or perform or comply with any of its covenants or obligations hereunder, GCC or GCC's successors or assigns may, but shall not be required to, make such payment or perform or comply with such covenants and obligations on behalf of the Issuer, and the amount of any such payment and the expenses (including but not limited to reasonable attorneys' fees) incurred by GCC or GCC's successors or assigns in performing or complying with such covenants and obligations, as the case may be, together with interest thereon at the highest lawful rate under the State of Texas law, shall be payable by the Issuer upon demand, or by the prevailing party according to Government Code 2251.043.

**15. Interest on Default.** If the Issuer fails to pay any Payment specified herein within twenty (20) days after the due date thereof, the Issuer shall pay to GCC or any successor or assigns of GCC, interest on such delinquent payment at the highest rate allowed by Texas law.

**16. Notices.** Any notices to be given or to be served upon any party hereto in connection with this Finance Contract must be in writing and may be given by certified or registered mail, and shall be deemed to have been given and received forty-eight (48) hours after mailing. Such notice shall be given to the parties at their respective addresses designated on the signature page of this Finance Contract or at such other address as either party may hereafter designate.

**17. Prepayment.**

(a) The Issuer shall have the right, at its option, to prepay the Finance Act Contract in whole, on any payment date which has an amount shown in the "Early Redemption Value" column of Exhibit B attached hereto. "N/A" shall mean not prepayable. The Issuer shall not have the right to prepay the Finance Contract in part at any time.

(b) As condition precedent to the Issuer's right to make, and GCC's obligation to accept, any such prepayment, GCC shall have actually received notice at least thirty (30) days in advance of the Issuer's intent to exercise its option to prepay.

**18. Continuing Disclosure.** Specifically and without limitation, the Issuer agrees to provide audited financial statements, prepared by a certified public accountant not later than six (6) months after and as of the end of each fiscal year. Periodic financial statements shall include a combined balance sheet as of the end of each such period, and a combined statement of revenues, expenditures and changes in fund balances, from the beginning of the then fiscal year to the end of such period. These reports must be certified as correct by one of the Issuer's authorized agents. If the Issuer has subsidiaries, the financial statements required will be provided on a consolidated and consolidation basis.

**19. Tax Exemption.**

(a) The Issuer certifies that it does not reasonably anticipate more than \$10,000,000 of "tax-exempt obligations", including this Finance Contract will be issued by it and any subordinate entities during the 2019 calendar year. Further, the Issuer designates this Finance Contract as "qualified tax exempt obligations" under Section 265 (b) 3 of the Internal Revenue Code of 1986, as amended (the "Code") eligible for the exception contained in Section 265 (b) 3 (D) of the Code allowing for an exception to the general rule of the Code which provides for a total disallowance of a deduction for interest expense allocable to the carrying of tax exempt obligations.

(b) The Issuer hereby represents and covenants that the proceeds of this Finance Contract are needed at this time to provide funds for the Issuer's purchase of the property for which this Finance Contract was executed and delivered, as specified in this Finance Contract; that (i) final disbursement of the proceeds of this Finance Contract will occur within three years from the Schedule Date of the EXHIBIT B, (ii) substantial binding obligations to expend at least five (5) percent of the net proceeds will be incurred within six months after the Schedule Date of the EXHIBIT B and (iii) the acquisition of such property will proceed with due diligence to completion; and that, except for the Escrow Agreement, if applicable, and the Payment Fund, no other funds or accounts have been or will be established or pledged to the payment of this Finance Contract.

(c) The Issuer will not directly or indirectly take any action or omit to take any action, which action or omission would cause the Finance Contract to constitute a "private activity bond" within the meaning of Section 141(a) of the Code.

(d) The Issuer will not take any action or fail to take any action with respect to the investment of the proceeds of this Finance Contract or any other funds of the Issuer, including amounts received from the investment of any of the foregoing, that would cause this Finance Contract to be an "arbitrage bond" within the meaning of such section 148 of the Code.

(e) There are no other obligations of the Issuer which are sold at substantially the same time as the Finance Contract, sold pursuant to the same plan of financing with the Finance Contract and are reasonably expected to be paid from substantially the same source of funds as the Finance Contract.

(f) The Issuer will not take any action, or as the case may be, knowingly omit to take any action within its control that, if taken or omitted, as the case may be, would cause the Finance Contract to be treated as "federally guaranteed" obligations for purposes of Section 149(b) of the Code.

(g) The Issuer will take all necessary steps to comply with the requirement that certain amounts earned by the Issuer on the investment of the "gross proceeds" of the Finance Contract (within the meaning of Section 148(f)(6)(B) of the Code), if any, be rebated to the federal government. Specifically, the Issuer will (i) maintain records regarding the investment of the gross proceeds of the Finance Contract as may be required to calculate and substantiate the amount earned on the investment of the gross proceeds of the Finance Contract and retain such records for at least six years after the day on which the last outstanding Finance Contract is discharged, (ii) account for all gross proceeds under a reasonable, consistently applied method of accounting, including any specified method of accounting required by applicable regulations to be used for all or a portion of the gross proceeds, (iii) calculate, at such times as are required by applicable regulations, the amount earned from the investment of the gross proceeds of the Finance Contract and (iv) timely pay all amounts required to be rebated to the federal government. In addition, the Issuer will correct any errors within a reasonable amount of time thereafter, including payment to the federal government of any delinquent amounts owed to it, including interest thereon and penalty, if any, as may be necessary or appropriate to assure that interest on the Finance Contract is not includable in the gross income for federal income tax purposes.

(h) The Issuer will timely file with the Secretary of the Treasury of the United States the information required by Section 149(e) of the Code with respect to the Finance Contract on such form and in such place as the Secretary may prescribe.



Notwithstanding any other provision of this Finance Contract, the Issuer's obligation under the covenants and provisions of this Section 19 shall survive the defeasance and discharge of this Finance Contract.

**20. Miscellaneous.**

(a) Time is of the essence. No covenant or obligations hereunder to be performed by the Issuer are waived, except by the written consent of GCC or its successors or assigns. GCC's or its successors or assigns' rights hereunder are cumulative and not alternative.

(b) This Finance Contract shall be construed in accordance with, and governed by the state of Texas laws.

(c) This Finance Contract constitutes the entire agreement between the parties and shall not be modified, waived, discharged, terminated, amended, altered or changed in any respect except by a written document signed by both GCC and the Issuer.

(d) Any term or provision of this Finance Contract found to be prohibited by law or unenforceable shall not affect the legality the remainder of this Finance Contract.

(e) Use of the neuter gender herein is for purposes of convenience only and shall be deemed to mean and include the masculine or feminine gender whenever appropriate.

(f) The captions set forth herein are for convenience of reference only, and shall not define or limit any of the terms or provisions hereof.

(g) Issuer agrees to equitably adjust the payments payable under this Finance Contract if there is a determination by the IRS that the interest payable pursuant to this Finance Contract (as incorporated within the schedule of payments) is not excludable from income in accordance with the Internal Revenue Code of 1986, as amended, such as to make GCC and its assigns whole.

(h) Except as otherwise provided, this Finance Contract shall be binding upon and inure to the benefit of the Parties hereto and their respective heirs, executors, administrators, legal representatives, successors and assigns, where permitted by this Finance Contract.

(i) In accordance with Texas Government Code sections 2270.001-2270.002, GCC verifies that it does not boycott Israel and will not boycott Israel during the term of this contract.

(j) THIS CONTRACT IS EVIDENCE OF A PRIVATELY PLACED BANK LOAN, IS NOT IN REGISTERED FORM, AND MAY NOT BE TRANSFERRED TO BEARER. TRANSFERS OF THIS CONTRACT ARE NOT REGISTERED ON BOOKS MAINTAINED FOR THAT PURPOSE BY THE ISSUER.

IN WITNESS WHEREOF, the parties have executed this Finance Contract as of the \_\_\_\_ day of \_\_\_\_\_ in the year 2019.

Government Capital Corporation

\_\_\_\_\_  
Authorized Signature  
345 Miron Dr.  
Southlake, TX 76092

Witness Signature \_\_\_\_\_  
Print Name \_\_\_\_\_  
Print Title \_\_\_\_\_

**The Issuer:** Blanco County

\_\_\_\_\_  
Brett Bray, County Judge  
101 E. Pecan  
Johnson City, TX 78636

Witness Signature \_\_\_\_\_  
Print Name \_\_\_\_\_  
Print Title \_\_\_\_\_

**EXHIBIT A**

Public Property Finance Act Contract **No.8808** (THE "FINANCE CONTRACT")  
By And Between  
Government Capital Corporation and **the Issuer**, Blanco County  
Dated as of October 10, 2019

**DESCRIPTION**

---

Personal Property

Property Cost: \$443,887.00

Payback Period: Two (2) Annual Payments

DS200 Ballot Scanner - Elections Admin  
Barricades - Emergency Mgmt  
4- AEDs - Emergency Mgmt  
Vehicle - Inspector  
1 ton Truck - Precinct 2  
3 Dell Computers for Detention - LEC  
3 Zuecher software - LEC  
3 Tasers - LEC  
3 Handheld Radios - LEC  
3 Laptop Computers - LEC  
3 Vehicle Radios - LEC  
2 Computers & 6 Monitors for Dispatch - LEC  
Facility Control Equipment - LEC  
4 Rifles & 4 Pistols - LEC  
4 Police Vehicles & Equipment - LEC  
Portable Scene Light for Dispatch - LEC  
2 Laptops & 2 Mobile printers for Dispatch - LEC  
2 Servers - LEC  
1 SCBA Cylinder - LEC  
Skid Steer - Precinct 3  
Auger - All Precincts

---

PROPERTY LOCATION:  
101 E. Pecan  
Johnson City, TX 78636

**EXHIBIT B**

**>> SCHEDULE OF PAYMENTS & EARLY REDEMPTION VALUE <<**

PUBLIC PROPERTY FINANCE ACT CONTRACT **NO.8808** (THE "FINANCE CONTRACT")

BY AND BETWEEN

Government Capital Corporation and the **Issuer**, Blanco County

Schedule Dated as of October 10, 2019

PMT NO.	PMT DATE MO. DAY YR	TOTAL PAYMENT	INTEREST PAID	PRINCIPAL PAID	EARLY REDEMPTION VALUE after pmt on this line
1	7/1/2020	\$231,748.08	\$11,108.99	\$220,639.09	N/A
2	7/1/2021	\$231,748.08	\$7,605.17	\$224,142.91	\$1.00
Grand Totals		\$463,496.16	\$18,714.16	\$444,782.00	

Interest Rate: 3.393%

**INCUMBENCY CERTIFICATE**

Public Property Finance Act Contract **No.8808** (THE "FINANCE CONTRACT")

By And Between

Government Capital Corporation and **the Issuer**, Blanco County

Dated as of October 10, 2019

I, Laura Walla, do hereby certify that I am the duly elected or appointed and acting County Clerk, of Blanco County, Issuer, a political subdivision or agency of the State of Texas, duly organized and existing under the laws of the State of Texas, that I or my designee have custody of the records of such entity, and that, as of the date hereof, the individual(s) named below are the duly elected or appointed officer(s) of such entity holding the office(s) set forth opposite their respective name(s). I further certify that (i) the signature(s) set opposite their respective name(s) and title(s) are their true and authentic signature(s), and (ii) such officers have the authority on behalf of such entity to enter into that certain Public Property Finance Act Contract No.8808, between Blanco County (the "Issuer") and Government Capital Corporation ("GCC").

<u>Name</u>	<u>Title</u>	<u>Signature</u>
Brett Bray	County Judge	_____

IN WITNESS WHEREOF, I have duly executed this certificate hereto this \_\_\_\_ day of \_\_\_\_\_, 2019.

By: \_\_\_\_\_  
Laura Walla, County Clerk



***[to be retyped on letterhead of the Issuer counsel]***

Government Capital Corporation  
345 Miron Dr  
Southlake, TX 76092

RE: Public Property Finance Act Contract No.8808

I have examined the Public Property Finance Act Contract No.8808 (the "Finance Contract") between the Blanco County (the "Issuer") and Government Capital Corporation ("GCC"). The Finance Contract provides financing for the purchase by the Blanco County of certain Property as identified in the Finance Contract and provides that the Issuer shall finance the Property by making Payments as specified in the Public Property Finance Act Contract No.8808.

I have also examined other certificates and documents as I have deemed necessary and appropriate under the circumstances.

Based upon the foregoing examination, I am of the opinion that:

1. The Issuer is a political subdivision or agency of the State of Texas with the requisite power and authority to incur obligations, the interest on which is exempt from taxation by virtue of Section 103(a) of the Internal Revenue Code of 1986, as amended;
2. The execution, delivery and performance by the Issuer of the Finance Contract have been duly authorized by all necessary action on the part of the Issuer; and
3. The Finance Contract constitutes a legal, valid and binding obligation of the Issuer enforceable in accordance with its terms.

The opinion expressed above is solely for the benefit of the Issuer, GCC and/or its subsequent successors or assigns.

Sincerely,

Attorney at Law

**RESOLUTION**

**A RESOLUTION REGARDING A CONTRACT FOR THE PURPOSE OF FINANCING "CAPITAL EQUIPMENT".**

WHEREAS, Blanco County (the "Issuer") desires to enter into that certain Finance Contract No.8808, by and between the Issuer and Government Capital Corporation ("GCC") for the purpose of financing "Capital Equipment". The Issuer desires to designate this Finance Contract as a "qualified tax-exempt obligation" of the Issuer for the purposes of Section 265 (b) (3) of the Internal Revenue Code of 1986, as amended.

NOW THEREFORE, BE IT RESOLVED BY BLANCO COUNTY:

Section 1. That the Issuer will enter into a Finance Contract with GCC for the purpose of financing "Capital Equipment".

Section 2. That the Finance Contract dated as of October 10, 2019, by and between the Blanco County and GCC is designated by the Issuer as a "qualified tax-exempt obligation" for the purposes of Section 265 (b) (3) of the Internal Revenue Code of 1986, as amended.

Section 3. That the Issuer appoints the County Judge or their designee, as the authorized signer of the Finance Contract Number 8808 dated as of October 10, 2019, by and between the Blanco County and GCC as well as any other ancillary exhibit, certificate, or documentation needed for the Contract.

Section 4. That should the need arise, if applicable, the County will use loan proceeds for reimbursement of expenditures related to the Property, within the meaning of Treasury Regulation § 1.150-2, as promulgated under the Internal Revenue Code of 1986, as amended.

This Resolution has been PASSED upon Motion made by Board Member \_\_\_\_\_, seconded by Board Member \_\_\_\_\_ by a vote of \_\_\_\_\_ to \_\_\_\_\_ and is effective this \_\_\_\_\_, 2019.

**Issuer:** Blanco County

Witness Signature

\_\_\_\_\_  
Brett Bray  
County Judge

\_\_\_\_\_  
Laura Walla  
County Clerk

## WIRE TRANSFER FORM

\*\*\* FINANCIAL INSTITUTION INFORMATION \*\*\*

Bank's Name: \_\_\_\_\_

Bank's Address: \_\_\_\_\_

Bank's Phone#: \_\_\_\_\_

Bank's Fed Routing#: \_\_\_\_\_

(Please confirm with bank since it may be different from routing number on deposit slip)

Bank Account Name: \_\_\_\_\_

Bank Account #: \_\_\_\_\_

Ref (if needed): \_\_\_\_\_

\_\_\_\_\_

**Please note that while there will not be a charge for our outgoing wire, your Bank may charge a fee for the incoming wire**

I hereby authorize Government Capital Corporation to transfer any monies due via wire transfer directly to our bank.

Signature: \_\_\_\_\_

Name: \_\_\_\_\_

Title: \_\_\_\_\_

Date: \_\_\_\_\_



# Request for Taxpayer Identification Number and Certification

**Give Form to the  
requester. Do not  
send to the IRS.**

▶ Go to [www.irs.gov/FormW9](http://www.irs.gov/FormW9) for instructions and the latest information.

Print or type.  
See Specific Instructions on page 3.

1 Name (as shown on your income tax return). Name is required on this line; do not leave this line blank.	
2 Business name/disregarded entity name, if different from above	
3 Check appropriate box for federal tax classification of the person whose name is entered on line 1. Check only <b>one</b> of the following seven boxes.  <input type="checkbox"/> Individual/sole proprietor or single-member LLC <input type="checkbox"/> C Corporation <input type="checkbox"/> S Corporation <input type="checkbox"/> Partnership <input type="checkbox"/> Trust/estate  <input type="checkbox"/> Limited liability company. Enter the tax classification (C=C corporation, S=S corporation, P=Partnership) ▶ _____ <b>Note:</b> Check the appropriate box in the line above for the tax classification of the single-member owner. Do not check LLC if the LLC is classified as a single-member LLC that is disregarded from the owner unless the owner of the LLC is another LLC that is <b>not</b> disregarded from the owner for U.S. federal tax purposes. Otherwise, a single-member LLC that is disregarded from the owner should check the appropriate box for the tax classification of its owner.  <input type="checkbox"/> Other (see instructions) ▶ _____	4 Exemptions (codes apply only to certain entities, not individuals; see instructions on page 3):  Exempt payee code (if any) _____  Exemption from FATCA reporting code (if any) _____  <small>(Applies to accounts maintained outside the U.S.)</small>
5 Address (number, street, and apt. or suite no.) See instructions.	Requester's name and address (optional)
6 City, state, and ZIP code	
7 List account number(s) here (optional)	

## Part I Taxpayer Identification Number (TIN)

Enter your TIN in the appropriate box. The TIN provided must match the name given on line 1 to avoid backup withholding. For individuals, this is generally your social security number (SSN). However, for a resident alien, sole proprietor, or disregarded entity, see the instructions for Part I, later. For other entities, it is your employer identification number (EIN). If you do not have a number, see *How to get a TIN*, later.

**Note:** If the account is in more than one name, see the instructions for line 1. Also see *What Name and Number To Give the Requester* for guidelines on whose number to enter.

<b>Social security number</b>																
<table style="width: 100%; border-collapse: collapse;"> <tr> <td style="border: 1px solid black; width: 25px; height: 25px;"></td> <td style="border: 1px solid black; width: 25px; height: 25px;"></td> <td style="border: 1px solid black; width: 25px; height: 25px;"></td> <td style="border: 1px solid black; width: 25px; height: 25px;"></td> <td style="text-align: center;">-</td> <td style="border: 1px solid black; width: 25px; height: 25px;"></td> <td style="border: 1px solid black; width: 25px; height: 25px;"></td> <td style="border: 1px solid black; width: 25px; height: 25px;"></td> <td style="border: 1px solid black; width: 25px; height: 25px;"></td> <td style="border: 1px solid black; width: 25px; height: 25px;"></td> <td style="text-align: center;">-</td> <td style="border: 1px solid black; width: 25px; height: 25px;"></td> <td style="border: 1px solid black; width: 25px; height: 25px;"></td> <td style="border: 1px solid black; width: 25px; height: 25px;"></td> <td style="border: 1px solid black; width: 25px; height: 25px;"></td> </tr> </table>					-						-					
				-						-						
<b>or</b>																
<b>Employer identification number</b>																
<table style="width: 100%; border-collapse: collapse;"> <tr> <td style="border: 1px solid black; width: 25px; height: 25px;"></td> <td style="border: 1px solid black; width: 25px; height: 25px;"></td> <td style="border: 1px solid black; width: 25px; height: 25px;"></td> <td style="border: 1px solid black; width: 25px; height: 25px;"></td> <td style="border: 1px solid black; width: 25px; height: 25px;"></td> <td style="border: 1px solid black; width: 25px; height: 25px;"></td> <td style="border: 1px solid black; width: 25px; height: 25px;"></td> <td style="border: 1px solid black; width: 25px; height: 25px;"></td> <td style="border: 1px solid black; width: 25px; height: 25px;"></td> <td style="border: 1px solid black; width: 25px; height: 25px;"></td> <td style="border: 1px solid black; width: 25px; height: 25px;"></td> <td style="border: 1px solid black; width: 25px; height: 25px;"></td> <td style="border: 1px solid black; width: 25px; height: 25px;"></td> <td style="border: 1px solid black; width: 25px; height: 25px;"></td> <td style="border: 1px solid black; width: 25px; height: 25px;"></td> <td style="border: 1px solid black; width: 25px; height: 25px;"></td> </tr> </table>																

## Part II Certification

Under penalties of perjury, I certify that:

1. The number shown on this form is my correct taxpayer identification number (or I am waiting for a number to be issued to me); and
2. I am not subject to backup withholding because: (a) I am exempt from backup withholding, or (b) I have not been notified by the Internal Revenue Service (IRS) that I am subject to backup withholding as a result of a failure to report all interest or dividends, or (c) the IRS has notified me that I am no longer subject to backup withholding; and
3. I am a U.S. citizen or other U.S. person (defined below); and
4. The FATCA code(s) entered on this form (if any) indicating that I am exempt from FATCA reporting is correct.

**Certification instructions.** You must cross out item 2 above if you have been notified by the IRS that you are currently subject to backup withholding because you have failed to report all interest and dividends on your tax return. For real estate transactions, item 2 does not apply. For mortgage interest paid, acquisition or abandonment of secured property, cancellation of debt, contributions to an individual retirement arrangement (IRA), and generally, payments other than interest and dividends, you are not required to sign the certification, but you must provide your correct TIN. See the instructions for Part II, later.

<b>Sign Here</b>	Signature of U.S. person ▶	Date ▶
------------------	----------------------------	--------

## General Instructions

Section references are to the Internal Revenue Code unless otherwise noted.

**Future developments.** For the latest information about developments related to Form W-9 and its instructions, such as legislation enacted after they were published, go to [www.irs.gov/FormW9](http://www.irs.gov/FormW9).

### Purpose of Form

An individual or entity (Form W-9 requester) who is required to file an information return with the IRS must obtain your correct taxpayer identification number (TIN) which may be your social security number (SSN), individual taxpayer identification number (ITIN), adoption taxpayer identification number (ATIN), or employer identification number (EIN), to report on an information return the amount paid to you, or other amount reportable on an information return. Examples of information returns include, but are not limited to, the following.

- Form 1099-INT (interest earned or paid)

- Form 1099-DIV (dividends, including those from stocks or mutual funds)
- Form 1099-MISC (various types of income, prizes, awards, or gross proceeds)
- Form 1099-B (stock or mutual fund sales and certain other transactions by brokers)
- Form 1099-S (proceeds from real estate transactions)
- Form 1099-K (merchant card and third party network transactions)
- Form 1098 (home mortgage interest), 1098-E (student loan interest), 1098-T (tuition)
- Form 1099-C (canceled debt)
- Form 1099-A (acquisition or abandonment of secured property)

Use Form W-9 only if you are a U.S. person (including a resident alien), to provide your correct TIN.

*If you do not return Form W-9 to the requester with a TIN, you might be subject to backup withholding. See What is backup withholding, later.*

# Information Return for Tax-Exempt Governmental Bonds

► Under Internal Revenue Code section 149(e)  
 ► See separate instructions.

Caution: If the issue price is under \$100,000, use Form 8038-GC.  
 ► Go to [www.irs.gov/F8038G](http://www.irs.gov/F8038G) for instructions and the latest information.

OMB No. 1545-0720

<b>Part I Reporting Authority</b>		If Amended Return, check here <input type="checkbox"/>	
1 Issuer's name Blanco County		2 Issuer's employer identification number (EIN) 74-6001460	
3a Name of person (other than issuer) with whom the IRS may communicate about this return (see instructions) Connie Harrison, Administration Assistant		3b Telephone number of other person shown on 3a 830-868-4266	
4 Number and street (or P.O. box if mail is not delivered to street address) 101 E. Pecan		Room/suite	5 Report number (For IRS Use Only) 3
6 City, town, or post office, state, and ZIP code Johnson City, TX 78636		7 Date of issue October 10, 2019	
8 Name of issue PUBLIC PROPERTY FINANCE ACT CONTRACT No. 8808		9 CUSIP number None	
10a Name and title of officer or other employee of the issuer whom the IRS may call for more information (see instructions) Brett Bray, County Judge		10b Telephone number of officer or other employee shown on 10a 830-868-4266	

<b>Part II Type of Issue (enter the issue price).</b> See the instructions and attach schedule.		
11 Education		
12 Health and hospital		
13 Transportation		
14 Public safety		
15 Environment (including sewage bonds)		
16 Housing		
17 Utilities		
18 Other. Describe ► Capital Equipment	\$444,782	00
19a If bonds are TANs or RANs, check only box 19a	<input type="checkbox"/>	
b If bonds are BANs, check only box 19b	<input type="checkbox"/>	
20 If bonds are in the form of a lease or installment sale, check box	<input checked="" type="checkbox"/>	

<b>Part III Description of Bonds.</b> Complete for the entire issue for which this form is being filed.					
	(a) Final maturity date	(b) Issue price	(c) Stated redemption price at maturity	(d) Weighted average maturity	(e) Yield
21	07/1/2021	\$ 444,782.00	\$ 444,782.00	1.5083 years	3.393 %

<b>Part IV Uses of Proceeds of Bond Issue (including underwriters' discount)</b>					
22	Proceeds used for accrued interest			22	N/A
23	Issue price of entire issue (enter amount from line 21, column (b))			23	\$444,782 00
24	Proceeds used for bond issuance costs (including underwriters' discount)		\$895 00	24	
25	Proceeds used for credit enhancement		N/A	25	
26	Proceeds allocated to reasonably required reserve or replacement fund		N/A	26	
27	Proceeds used to refund prior tax-exempt bonds. Complete Part V		N/A	27	
28	Proceeds used to refund prior taxable bonds. Complete Part V		N/A	28	
29	Total (add lines 24 through 28)			29	\$895 00
30	Nonrefunding proceeds of the issue (subtract line 29 from line 23 and enter amount here)			30	\$443,887 00

<b>Part V Description of Refunded Bonds.</b> Complete this part only for refunding bonds.		
31	Enter the remaining weighted average maturity of the tax-exempt bonds to be refunded	N/A years
32	Enter the remaining weighted average maturity of the taxable bonds to be refunded	N/A years
33	Enter the last date on which the refunded tax-exempt bonds will be called (MM/DD/YYYY)	N/A
34	Enter the date(s) the refunded bonds were issued (MM/DD/YYYY)	



**Part VI Miscellaneous**

<b>35</b>	Enter the amount of the state volume cap allocated to the issue under section 141(b)(5) . . . . .	<b>35</b>	
<b>36a</b>	Enter the amount of gross proceeds invested or to be invested in a guaranteed investment contract (GIC). See instructions . . . . .	<b>36a</b>	
<b>b</b>	Enter the final maturity date of the GIC ▶ (MM/DD/YYYY) _____		
<b>c</b>	Enter the name of the GIC provider ▶ _____		
<b>37</b>	Pooled financings: Enter the amount of the proceeds of this issue that are to be used to make loans to other governmental units . . . . .	<b>37</b>	
<b>38a</b>	If this issue is a loan made from the proceeds of another tax-exempt issue, check box <input type="checkbox"/> and enter the following information:		
<b>b</b>	Enter the date of the master pool bond ▶ (MM/DD/YYYY) _____		
<b>c</b>	Enter the EIN of the issuer of the master pool bond ▶ _____		
<b>d</b>	Enter the name of the issuer of the master pool bond ▶ _____		
<b>39</b>	If the issuer has designated the issue under section 265(b)(3)(B)(i)(III) (small issuer exception), check box . . . . .		<input checked="" type="checkbox"/>
<b>40</b>	If the issuer has elected to pay a penalty in lieu of arbitrage rebate, check box . . . . .		<input type="checkbox"/>
<b>41a</b>	If the issuer has identified a hedge, check here <input type="checkbox"/> and enter the following information:		
<b>b</b>	Name of hedge provider ▶ _____		
<b>c</b>	Type of hedge ▶ _____		
<b>d</b>	Term of hedge ▶ _____		
<b>42</b>	If the issuer has superintegrated the hedge, check box . . . . .		<input type="checkbox"/>
<b>43</b>	If the issuer has established written procedures to ensure that all nonqualified bonds of this issue are remediated according to the requirements under the Code and Regulations (see instructions), check box . . . . .		<input type="checkbox"/>
<b>44</b>	If the issuer has established written procedures to monitor the requirements of section 148, check box . . . . .		<input type="checkbox"/>
<b>45a</b>	If some portion of the proceeds was used to reimburse expenditures, check here <input type="checkbox"/> and enter the amount of reimbursement . . . . . ▶ _____		
<b>b</b>	Enter the date the official intent was adopted ▶ (MM/DD/YYYY) _____		

<b>Signature and Consent</b>	Under penalties of perjury, I declare that I have examined this return and accompanying schedules and statements, and to the best of my knowledge and belief, they are true, correct, and complete. I further declare that I consent to the IRS's disclosure of the issuer's return information, as necessary to process this return, to the person that I have authorized above.			
	<div style="display: flex; justify-content: space-between;"> <span>▶ _____</span> <span>▶ _____</span> </div>		<div style="display: flex; justify-content: space-between;"> <span>▶ <b>Brett Bray, County Judge</b></span> <span>▶ _____</span> </div>	
	Signature of issuer's authorized representative	Date	Type or print name and title	
<b>Paid Preparer Use Only</b>	Print/Type preparer's name	Preparer's signature	Date	Check <input type="checkbox"/> if self-employed
	Firm's name ▶ _____	Firm's EIN ▶ _____		
	Firm's address ▶ _____	Phone no. _____		



TEXAS ASSOCIATION of COUNTIES  
RISK MANAGEMENT POOL

**Workers' Compensation Renewal Questionnaire**

**Blanco County**

Coverage Period: January 1, 2020 through January 1, 2021

Thank you for participating in the TAC Risk Management Pool's Workers' Compensation program. As we prepare your renewal, there are a few questions we need you to answer so that we can provide you the most comprehensive and cost effective coverage possible. Pursuant to the Interlocal Participation Agreement, Section 4. Annual Contribution, 4.01 requires that the member timely submit to the Pool documentation necessary for the Pool to properly underwrite the renewal. To ensure that we have up-to-date information, please fill out each page completely and make any changes directly to this document. You can also provide supplemental sheets as necessary. NOTE: Omitted information may result in an exclusion from coverage.

We value your membership in the TAC Risk Management Pool and look forward to another successful year! If you have any questions or need help completing the Renewal Questionnaire, please contact your Member Services Representative (listed below) at 800-456-5974.

Member Service Representative: Ms. Sabrina Pena, AU

Email: [sabrinap@county.org](mailto:sabrinap@county.org)

**Pool Coordinator/Workers' Compensation Coordinator**

Our records indicate that the Member has designated the individual below as the contact for this coverage. In accordance with the terms of the Interlocal Participation Agreement, the Pool Coordinator has express authority to represent and to bind the Member, and the Pool will not be required to contact any other individual regarding matters arising from or related to this Agreement. If the Member wishes to change or update the Pool Coordinator information, please make the necessary changes below.

Contact: Hon. Camille H. Swift

Email: [bctreas@co.blanco.tx.us](mailto:bctreas@co.blanco.tx.us)

Office Phone Number: (830) 868-4566

Fax Number: (830) 868-7788

Mailing Address: PO Box 471

City, State, Zip: Johnson City, TX, 78636-0471

**General Information**

- |  | Yes or No |
|--|-----------|
| 1. Do you use a manned aircraft in any capacity?   | no        |
| If Yes: Are your pilots employees?   |           |
| If yes, please complete the Aircraft and Aircraft and Pilot info tabs.   |           |
| Are your pilots volunteers?  |           |
| If yes, and you desire to include Workers' Compensation coverage please complete the Aircraft and Aircraft and Pilot info tabs.                            |           |
| 2. Do you have operations involving the loading, unloading, repair, or construction of watercraft or vessels, including work performed on barges or docks? | no        |
| 3. Do you own, operate, or maintain a railroad, or own, lease, operate, or repair railroad equipment?  | no        |
| 4. Do you engage in manufacturing, handling, transporting, distributing, or storing explosives or explosive substances (other than gasoline)?              | no        |
| 5. Do you perform any underground, subaqueous, or tunneling operations?  | no        |
| 6. Do you provide group transportation for employees to and from the workplace?  | no        |
| If Yes:  |           |
| * Average number of employees in a vehicle per trip:   |           |
| * Maximum number of employees in a vehicle per trip:   |           |
| * Average number of daily trips:   |           |
| 7. Do you have a County Fire Department that contracts with the state or National Forest Service to fight wildland fires?                                  | no        |
| If Yes: Please advise in the last 5 years for each fire the number of employees and duration in the explanation box below.                                 |           |
| For any "Yes" responses to the questions above, please provide a brief explanation:  |           |

**Unreported Claims**

- |   | Yes or No |
|---|-----------|
| 1. Are you, or any officer or employee, aware of, or have knowledge of any circumstance, occurrence, fact or event which is likely to be a basis of a claim, either now or in the future? | no        |
| If yes, please describe:  |           |



2. Has the situation been reported to TAC Claims Department?

## Acknowledgement and Acceptance

### Member Name: Blanco County

Member acknowledges that the information submitted in this questionnaire is true and accurate, including all known potential claims. The information submitted may be used by the Pool in processing the renewal and in assessing the coverage needs of the Member. The questions posed, or any wording of the questionnaire, should not and may not be relied upon by the Member as implying that coverage exists for any particular claim or class of claims. The only coverage provided by the Pool to the Member is as described in the applicable Coverage Document, including any endorsements and the Contribution and Coverage Declaration, issued to a covered Member.

If the Member makes no changes, the Pool will assume the Member is reporting for the same information as in the previous applicable Coverage Period. The Member understands that any failure to fully and accurately answer the questionnaire and any attached documents may result in denial of coverage provided by the Pool.

Signature of County Judge or presiding official of the Political Subdivision

Date



# TEXAS ASSOCIATION of COUNTIES RISK MANAGEMENT POOL

**Please enter the estimated payroll and the number of employees for calendar year 2020 in the highlighted columns.**

Only include payroll for Elected Officials if your Commissioners Court has selected this Optional Coverage. For Optional Coverages, refer to the next tab for instructions on reporting this payroll.

**Member Name : Blanco County**

*Coverage Period: January 1, 2020 through January 1, 2021*

Rating Class Code	Rating Class Description	Payroll + 2%	Current Number of Employees	Current Number of Volunteers	Estimated 2020 Payroll Amount	Estimated 2020 Number of Employees	Note
07422	Aircraft Ambulance						
07418	Aircraft Oper. (Patrol, Ambulan)						
07423	Airport						
07721	Ambulance						
09016	Amusement Park, Exhibition Center						
08391	Auto Mechanics						
09014	Bldg. Maintenance & Janitors	\$28,056	1		62,000	2	
05403	Carpentry (NOC)						
09220	Cemetery Operations						
04511	Chemical Analyst/Assayers	\$24,805	1		\$29,493.	1	
08809	Chief Of Commissions & Directors						
08810	Clerical	\$928,499	34		\$1,334,275.00	33	
05606	Co. & Drain Dist. Commissioners	\$187,690	4		191,368	4	
08006	Commodity Dist.-Retail Grocery						
05203	Concrete Construction-Bridges						
07380	Drivers						
08811	Election Personnel	\$6,982	2		\$6,982.00	2	
05190	Electrical Wiring W/In Buildings						
08601	Engineers, Surveyors						
07704	Firefighters & Drivers						
09402	Garbage Collection & Drivers						
06319	Gas/Water Main Connection Constr						
09060	Golf Course						
08828	Homemaker Service						
08833	Hospital Professional & Clerical						
09040	Hospital, All Others						
09033	Housing Authority & Drivers						
09032	Housing Authority Mgrs & Empls						
04519	Insect Control						
08709	Inspectors, Samplers, Or Weighers Of Merchandise On Vessels Or Docks Classification						
06229	Irrigation/Drainage Construct.						
08812	Jurors	\$6,501	1		\$6,501	1	
08742	Juv Probation, Collectors, Sales						
07722	Juvenile Detention Officers						
06219	Landfill Operation & Drivers, Excavation NOC						
07590	Landfill, Garbage Reduction						
07720	Law Enforcement	\$1,136,828	36		\$1,165,681	30	
08820	Law Office	\$163,314	3		\$118,965.00	2	
08838	Library/Museum-Prof. & Clerical						
08829	Nursing Home Employees						
05191	Office Technician						
09015	Parking Lots & Drivers						
09102	Parks & Recreation						
08227	Permanent Yard Employees						
08832	Physician Med.Lab. Minor Emer. Clinic						
04299	Printing						

Rating Class Code	Rating Class Description	Payroll + 2%	Current Number of Employees	Current Number of Volunteers	Estimated 2020 Payroll Amount	Estimated 2020 Number of Employees	Note
08264	Recycling Or Shredding Workers & Drivers	\$32,401	3		\$35,463	3	
09079	Restaurant, Food Preparation						
05506	Road Employees-Paving, Repaving	\$292,151	8		\$297,593.00	8	
09101	Schools - All Other Employees						
07580	Sewage Disposal Plant Operations						
07327	Stevedoring						
08017	Store Clerks						
09061	Swimming Pools						
09019	Toll Bridge Employees						
08831	Vet Hospital & Animal Control						
08859	Volunteers - All Others						
08857	Volunteers - Emergency Medical Personnel						
08855	Volunteers - Fire Fighters						
08856	Volunteers - Law Enforcement	\$4,486		1	\$4,486.00	1	
08292	Warehousing NOC And Driver						
07520	Waterworks Operation & Drivers						
03365	Welder						
08868	Youth & Community Cntr Directors						



# TEXAS ASSOCIATION of COUNTIES RISK MANAGEMENT POOL

If you wish to add additional coverages, please make your selection in the form below.

Please note, Chapter 504 Labor Code requires political subdivisions to have a majority vote to add or remove optional coverages for Volunteers, Elected Officials, Election Workers (non-employees) or Jurors.

**Member Name : Blanco County**

Coverage Period: January 1, 2020 through January 1, 2021

### Current Optional Coverages Elected

Elected Officials

Jurors

Volunteers - Law Enforcement

Election Workers (non-employees)

### OPTIONAL COVERAGE CHANGES ONLY

#### 1. ELECTED OFFICIALS

Does your governing body desire this coverage?

Enter Yes or No:  Yes

If yes, include the estimated payroll of all elected officials on the payroll tab, based on the job responsibility of the elected official. If no, do not report the estimated payroll of any elected official.

#### 2. VOLUNTEERS

Does your governing body desire this coverage?

Enter Yes or No:  Yes

If yes, enter the estimated payroll on the payroll tab. Four classifications are available: Volunteers - Firefighters, Volunteers - Law Enforcement, Volunteers - Emergency Medical Personnel, and Volunteers - All Others. You may choose to cover any or all classifications.

Please note: You can calculate annual salary by using \$5,200 per volunteer, or if you have an auditable record of hours that each volunteer was on duty or participating in sponsored training you may determine the "salary" by multiplying the number of hours by the hourly wage that would have been used if the services had been provided by an employee.

#### 3. JURORS

Does your governing body desire coverage of Jurors?

Enter Yes or No:  YES

If yes, enter the estimated payroll on the payroll tab.

#### 4. ELECTION WORKERS (NON-EMPLOYEES)

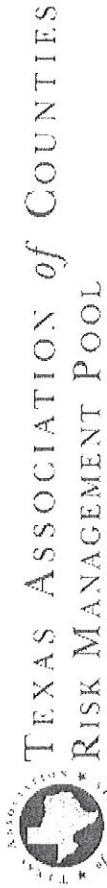
Does your governing body desire coverage of election personnel?

Enter Yes or No:  YES

If yes, enter the estimated payroll on the payroll tab.

Please note: Election Personnel refers to temporary or contract personnel paid for service in the conduct of an election. Do not include payroll for county employees. County employed election staff should be reported under Clerical.





Please update your list of locations and the number of employees at each location. Place an X in the 'Remove Location' column if this location is no longer valid. Update the employee counts for all locations. Add new locations at the bottom.

**Member Name : Blanco County**

Coverage Period: January 1, 2020 through January 1, 2021

Policy Effective Date	Structure Identifier	Local Address	Employee Count	Remove Location	Updated Employee Count	Maximum Employees At One Time	Number of Stories	Construction Code	Year Built
01/01/2020	Courthouse	101 E. Pecan, Johnson City, TX, 78636	17		17				
01/01/2020	Jail	400 S. HWY 281, Johnson City, TX, 78636	11		11				
01/01/2020	Law Enforcement	400 S. HWY 281, Johnson City, TX, 78636	23		28				
01/01/2020	Office and Storage	304 S 281 N, JOHNSON CITY, TX, 78636	3		3				
01/01/2020	Office and Storage	862 FM 962 EAST, ROUND MOUNTAIN, TX, 78663	3		3				
01/01/2020	Office/Storage	402 BLANCO AVE, BLANCO, TX, 78606	3		6				
01/01/2020	Offices	101 EAST CYPRESS, JOHNSON CITY, TX, 78636	9		10				
01/01/2020	Offices	402 BLANCO AVE, BLANCO, TX, 78606	3		3				

\*Complete this section if a location has 200 or more employees

**New Location(s)**















TEXAS ASSOCIATION of COUNTIES  
RISK MANAGEMENT POOL

If you have any watercraft over 26' in length, please fill out the form below for each watercraft.

**Member Name : Blanco County**

Coverage Period: January 1, 2020 through January 1, 2021

Watercraft Type  
Make  
Model  
Model Year  
Length  
Horse Power  
Owned | Leased | Chartered  
Number of Crew  
Passenger Capacity  
Use  
Frequency of Use  
Primary Body of Water

N/A

Is Protection and Indemnity coverage provided for each watercraft listed above?

If "No" Please Explain:

Pro-Tec Septic LLC  
1400 Ashley Dr  
Round Rock, TX 78665  
(512) 614-4444  
info@protecseptic.com  
www.protecseptic.com

## Estimate

### ADDRESS

Blanco County Jail  
400 U.S. HWY 281 South  
Johnson City, Texas 78636  
USA

ESTIMATE # 1030

DATE 09/11/2019  
EXPIRATION DATE 09/20/2019

ACTIVITY	QTY	RATE	AMOUNT
Pump Fee	1	250.00	250.00
Disposal Fee .26 Per Gallon:Grease trap pumping per gallon	2,000	0.35	700.00

I believe you said the grease trap was a 2000 gallon. this estimate is quoted for 2000 gallons. This contract will renew automatically every year from the date from the 1st pumping. \*\*\* Please send email to discontinue services \*\*\* Please sign and return

TOTAL

**\$950.00**

This estimate is good for 1 year which equals out to be 4 quarterly pumpings. on a schedule basis. Any emergency calls will also have a emergency call fee of \$150.00 if it is not a scheduled pumping. Prices will NOT go up during this 1 year contract. customer may cancel upon 30 days notice. Any cancellation shall not relieved Blanco County for services already performed."

Accepted By

Accepted Date

There will be a 10% surcharge per month on late invoices.

received  
9-11-19 CWF

## Blanco County Appraisal District

PO Box 338/615 N Nugent Ave  
Johnson City, TX 78636  
830-868-4013 Fax 830-868-7330  
[candice.fry@blancocad.com](mailto:candice.fry@blancocad.com)

September 9, 2019

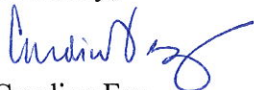
County of Blanco  
Attn: Judge Bray  
PO Box 471  
Johnson City, TX 78636

Dear Judge Bray,

We are now accepting nominations for Board of Director Member(s). Each voting unit may nominate one candidate for each position to be filled. Thus, the unit may nominate from one to five candidates.

The presiding officer of the unit must submit the name(s) of the nominee(s) by written resolution to the Chief Appraiser before the October 15, 2019 deadline.

Sincerely,



Candice Fry  
Chief Appraiser



# Blanco County Appraisal District

PO Box 338/615 N Nugent Ave

Johnson City, TX 78636

830-868-4013 Fax 830-868-7330

[candice.fry@blancocad.com](mailto:candice.fry@blancocad.com)

September 9, 2019

Per § 6.03 (b) of the Texas Tax Code, the terms of all members of the Blanco County Appraisal District Board of Directors will expire on December 31, 2019. In light of that, this letter is forwarded to the required representatives of the taxing units entitled to participate in the nomination and voting process for the directors to serve the next two year term. Following is a brief timeline of this process:

- The chief appraiser delivers notice of election and voting entitlement to the taxing units.
- Each taxing unit may nominate by resolution one candidate for each directorship to be filled (5 directorships are to be filled). Nominations by way of resolution must be submitted to the chief appraiser no later than **October 15, 2019**.
- The chief appraiser will then prepare and deliver a ballot of all nominees to each taxing unit before **October 30, 2019**.
- The governing body of each taxing unit must determine their vote by resolution and submit to the chief appraiser before **December 15, 2019**.
- The chief appraiser will tabulate the votes, declare the winners and submit the results to the governing body of each taxing unit before December 31, 2019.

## Nominee Qualifications

§6.03(a) of the Texas Tax Code states that to be eligible to serve on the board of directors, an individual must be a resident of the district and must have resided in the district for at least two years immediately preceding the date the individual takes office. §6.035(a) of the Texas Tax Code disqualifies an individual from serving as a director if that individual owns property on which delinquent property taxes have been owed for more than 60 days. This restriction is not applicable under installment agreements or deferrals. There are also additional restrictions outlined in §6.035 Texas Tax Code. Enclosed is a statement of Qualifications to be completed by each nominee and turned in to the Blanco County Appraisal District with formal nominations.

## Voting Allocation

Enclosed, you will find a summary of the voting entitlement of the taxing units participating in the nomination and election for the Blanco County Appraisal District Board of Directors for the 2020/2021 term. Votes may be allocated to one nominee or votes may be distributed to more than one nominee. The nominees who receive the largest cumulative vote total are declared the directors for the next two years.

If you have any questions regarding this process, please do not hesitate to contact me.  
Thank you for your time and effort in this process.

Sincerely,

Candice Fry, R.P.A.,R.T.A.,C.C.A.  
Chief Appraiser

# Blanco County Appraisal District

PO Box 338/615 N Nugent Ave  
 Johnson City, TX 78636  
 830-868-4013 Fax 830-868-7330

<u>Jurisdiction</u>	<u>2018 Tax Levy</u>	<u>% of Roll</u>	<u>Calculation</u>	<u>Votes</u>
Blanco County	6,205,701	0.2208	$x 1000 = 220.80 \times 5$	1104
Blanco ISD	10,995,971	0.3913	$x 1000 = 391.3 \times 5$	1956.5
Johnson City ISD	9,571,191	0.3406	$x 1000 = 340.6 \times 5$	1703
Fredericksburg ISD	60,063	0.0021	$x 1000 = 2.1 \times 5$	10.5
City of Blanco	520,341	0.0185	$x 1000 = 18.5 \times 5$	92.5
City of Johnson City	749,733	0.0267	$x 1000 = 26.7 \times 5$	133.5
<b>Total</b>	<b><u>28,103,000</u></b>	<b><u>1.0000</u></b>		<b><u>5,000</u></b>

**State Property Tax Code**

Board of Directors, §6.03(d)

*The voting entitlement of a taxing unit that is entitled to vote for directors is determined by dividing the total dollar amount of property taxes imposed in the district by the taxing unit for the preceding tax year by the sum of the total dollar amount of property taxes imposed in the district for that year by each taxing unit that is entitled to vote, by multiplying the quotient by 1,000. That number is multiplied by the number of directorships to be filled. A taxing unit participating in two or more districts is entitled to vote in each district in which it participates, but only the taxes imposed in a district are used to calculate voting entitlement in that district.*

# Blanco County Appraisal District

PO Box 338/615 N Nugent Ave  
Johnson City, TX 78636  
830-868-4013 Fax 830-868-7330  
[candice.fry@blancocad.com](mailto:candice.fry@blancocad.com)

## Nominee Statement

I have reviewed the requirements and restrictions, and hereby swear and affirm that I conform to the qualifications to be nominated and serve as a member of the Board of Directors for the Blanco County Appraisal District.

\_\_\_\_\_  
Signature of Nominee

\_\_\_\_\_  
Date

\_\_\_\_\_  
Printed Name of Nominee

\_\_\_\_\_  
Contact Phone Number

\_\_\_\_\_  
Street Address of Nominee's Residency      City      State      Zip

Number of years at this residence? \_\_\_\_\_